

Tab 2 - Monthly Performance at a Glance - My Property vs. Competitive Set

Best Western East Zion Thunderbird Lodge Jct State Rte 9 & Hwy 89 Mount Carmel, UT 84755 Phone: (435) 648-2203

STR # 3686 ChainID: 45027 MgtCo: None Owner: None

For the Month of: June 2019 Date Created: July 18, 2019 Monthly Competitive Set Data Excludes Subject Property

June 2019

	Occupancy (%)			ADR			RevPAR		
	My Prop	Comp Set	Index (MPI)	My Prop	Comp Set	Index (ARI)	My Prop	Comp Set	Index (RGI)
Current Month	56.4	88.7	63.7	138.09	124.06	111.3	77.95	110.01	70.9
Year To Date	35.1	66.6	52.6	123.35	100.83	122.3	43.23	67.19	64.3
Running 3 Month	56.5	87.2	64.9	130.98	116.54	112.4	74.04	101.57	72.9
Running 12 Month	40.3	70.3	57.3	133.56	109.62	121.8	53.79	77.10	69.8

June 2019 vs. 2018 Percent Change (%)

	Occupancy			ADR			RevPAR		
	My Prop	Comp Set	Index (MPI)	My Prop	Comp Set	Index (ARI)	My Prop	Comp Set	Index (RGI)
Current Month	-15.0	2.9	-17.4	-11.3	-10.2	-1.3	-24.7	-7.6	-18.5
Year To Date	-13.5	-4.7	-9.3	-5.7	-9.0	3.6	-18.4	-13.2	-6.0
Running 3 Month	-9.1	-0.1	-9.0	-9.5	-9.4	0.0	-17.7	-9.5	-9.0
Running 12 Month	-16.0	-5.1	-11.5	-2.1	-6.0	4.1	-17.8	-10.8	-7.8

Tab 3 - STAR Summary - My Property vs. Comp Set and Industry Segments

Best Western East Zion Thunderbird Lodge Jct State Rte 9 & Hwy 89 Mount Carmel, UT 84755 Phone: (435) 648-2203

STR # 3686 ChainID: 45027 MgtCo: None Owner: None

For the Month of: June 2019 Date Created: July 18, 2019 Monthly Competitive Set Data Excludes Subject Property

Best Western East Zion Thunderbird Lodge
Market: Utah Area
Market Class: Midscale Class
Submarket: Utah Regional
Submarket Scale: Midscale Chains
Competitive Set: Competitors

Occupancy (%)							
Current Month	% Chg	Year to Date	% Chg	Running 3 Month	% Chg	Running 12 Month	% Chg
56.4	-15.0	35.1	-13.5	56.5	-9.1	40.3	-16.0
71.0	-2.5	57.1	-1.9	64.6	-1.7	58.4	-3.1
70.4	-4.5	55.7	-2.2	65.6	-2.0	57.6	-3.4
71.5	-1.8	54.9	-0.1	63.4	-0.8	56.8	-1.0
78.2	-2.6	59.5	-1.2	71.5	-1.7	62.2	-3.2
88.7	2.9	66.6	-4.7	87.2	-0.1	70.3	-5.1

Supply			
Month % Chg	YTD % Chg	Run 3 Mon % Chg	Run 12 Mon % Chg
0.0	0.0	0.0	-0.3
4.0	4.5	4.1	4.4
2.3	2.3	2.3	1.4
2.4	1.8	2.3	1.6
4.3	2.8	4.3	4.4
0.0	0.0	0.0	0.0

Best Western East Zion Thunderbird Lodge
Market: Utah Area
Market Class: Midscale Class
Submarket: Utah Regional
Submarket Scale: Midscale Chains
Competitive Set: Competitors

Average Daily Rate							
Current Month	% Chg	Year to Date	% Chg	Running 3 Month	% Chg	Running 12 Month	% Chg
138.09	-11.3	123.35	-5.7	130.98	-9.5	133.56	-2.1
123.88	-0.5	145.94	1.8	122.82	0.0	135.37	1.4
107.02	-2.1	114.10	-0.3	106.58	-1.6	109.81	-0.4
143.13	1.4	179.57	4.0	141.38	2.1	161.42	3.7
130.18	-3.2	117.88	-1.9	129.84	-1.6	119.19	-1.1
124.06	-10.2	100.83	-9.0	116.54	-9.4	109.62	-6.0

Demand			
Month % Chg	YTD % Chg	Run 3 Mon % Chg	Run 12 Mon % Chg
-15.0	-13.5	-9.1	-16.2
1.4	2.5	2.4	1.2
-2.3	0.0	0.2	-2.1
0.6	1.7	1.5	0.6
1.5	1.6	2.5	1.1
2.9	-4.7	-0.1	-5.1

Best Western East Zion Thunderbird Lodge
Market: Utah Area
Market Class: Midscale Class
Submarket: Utah Regional
Submarket Scale: Midscale Chains
Competitive Set: Competitors

RevPAR							
Current Month	% Chg	Year to Date	% Chg	Running 3 Month	% Chg	Running 12 Month	% Chg
77.95	-24.7	43.23	-18.4	74.04	-17.7	53.79	-17.8
87.89	-3.0	83.30	-0.1	79.40	-1.7	79.06	-1.7
75.38	-6.5	63.53	-2.5	69.92	-3.6	63.24	-3.9
102.32	-0.5	98.66	4.0	89.57	1.3	91.63	2.6
101.85	-5.8	70.10	-3.1	92.83	-3.3	74.17	-4.2
110.01	-7.6	67.19	-13.2	101.57	-9.5	77.10	-10.8

Revenue			
Month % Chg	YTD % Chg	Run 3 Mon % Chg	Run 12 Mon % Chg
-24.7	-18.4	-17.7	-18.0
0.9	4.3	2.4	2.6
-4.3	-0.2	-1.3	-2.5
1.9	5.8	3.6	4.3
-1.7	-0.4	0.8	0.0
-7.6	-13.2	-9.5	-10.8

Market: Utah Area
Market Class: Midscale Class
Submarket: Utah Regional
Submarket Scale: Midscale Chains
Competitive Set: Competitors

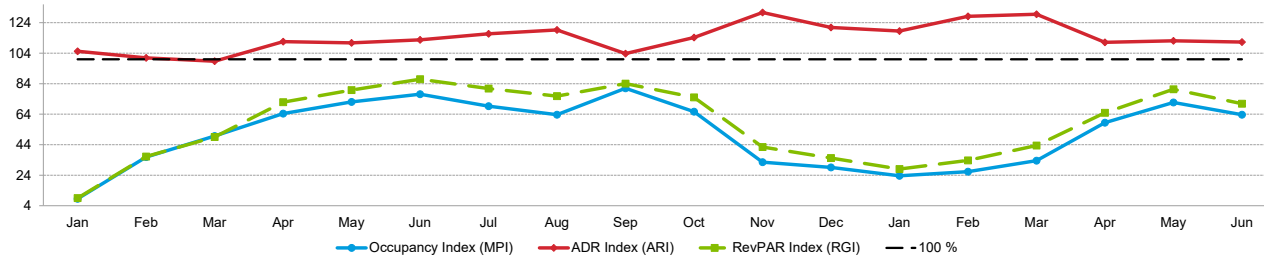
Census/Sample - Properties & Rooms					
Census		Sample		Sample %	
Properties	Rooms	Properties	Rooms	Rooms	
446	31021	254	21667	69.8	
68	4389	45	3067	69.9	
313	20146	149	12206	60.6	
74	6073	74	6073	100.0	
5	387	5	387	100.0	

Pipeline			
Market: Utah Area			
Under Construction		Planning	
Properties	Rooms	Properties	Rooms
7	730	32	3092
See Help page for pipeline definitions.			

Tab 4 - Competitive Set Report

Best Western East Zion Thunderbird Lodge Jct State Rte 9 & Hwy 89 Mount Carmel, UT 84755 Phone: (435) 648-2203
 STR # 3686 ChainID: 45027 MgtCo: None Owner: None
 For the Month of: June 2019 Date Created: July 18, 2019 Monthly Competitive Set Data Excludes Subject Property

Monthly Indexes



RevPAR Percent Change



Occupancy (%)	2018												2019					
	Jan	Feb	Mar	Apr	May	Jun	Jul	Aug	Sep	Oct	Nov	Dec	Jan	Feb	Mar	Apr	May	Jun
My Property	3.2	17.2	35.3	54.3	65.7	66.4	57.6	52.9	73.3	56.2	19.2	12.3	7.7	11.1	21.0	48.2	64.7	56.4
Competitive Set	37.8	47.9	71.0	84.3	91.1	86.2	83.2	90.5	59.1	42.4	32.4	42.2	62.6	82.4	90.3	88.7		
Index (MPI)	8.5	35.9	49.7	64.4	72.1	77.1	69.2	63.6	81.0	65.7	32.5	29.1	23.6	26.3	33.5	58.5	71.7	63.7
Rank	5 of 5	6 of 6	6 of 6	6 of 6	6 of 6	6 of 6	6 of 6	6 of 6	6 of 6	6 of 6	6 of 6	6 of 6	6 of 6	6 of 6	6 of 6	6 of 6	6 of 6	6 of 6

% Chg	2018												2019					
	Jan	Feb	Mar	Apr	May	Jun	Jul	Aug	Sep	Oct	Nov	Dec	Jan	Feb	Mar	Apr	May	Jun
My Property	-77.4	-21.0	5.5	-17.2	-11.3	-12.8	-22.5	-20.8	-10.9	-21.7	-14.8	-7.3	137.7	-35.4	-40.5	-11.3	-1.5	-15.0
Competitive Set	31.8	-3.5	5.4	-5.0	-1.8	-6.4	-3.8	-3.2	-4.2	-7.1	-6.9	-9.8	-14.1	-11.9	-11.7	-2.2	-0.9	2.9
Index (MPI)	-82.9	-18.1	0.1	-12.8	-9.7	-6.8	-19.5	-18.2	-7.1	-15.7	-8.4	2.7	176.7	-26.7	-32.6	-9.2	-0.6	-17.4
Rank	5 of 5	5 of 6	4 of 6	6 of 6	6 of 6	5 of 6	6 of 6	6 of 6	6 of 6	6 of 6	5 of 6	2 of 6	1 of 5	6 of 6	6 of 6	6 of 6	5 of 6	6 of 6

Year To Date	Running 3 Month			Running 12 Month					
	2017	2018	2019	2017	2018	2019	2017	2018	2019
My Property	47.7	40.5	35.1	72.0	62.2	56.5	56.7	47.9	40.3
Competitive Set	70.0	69.9	66.6	91.2	87.2	87.2	73.2	74.1	70.3
Index (MPI)	68.2	58.0	52.6	78.9	71.3	64.9	77.5	64.7	57.3
Rank	6 of 6	6 of 6	6 of 6	6 of 6	6 of 6	6 of 6	6 of 6	6 of 6	6 of 6

ADR	2018												2019					
	Jan	Feb	Mar	Apr	May	Jun	Jul	Aug	Sep	Oct	Nov	Dec	Jan	Feb	Mar	Apr	May	Jun
My Property	74.62	73.49	89.39	123.07	151.29	155.69	155.64	156.27	144.65	134.88	98.89	83.36	77.54	87.84	96.75	109.92	140.16	138.09
Competitive Set	70.92	72.83	90.56	110.30	136.59	138.09	133.35	131.04	139.43	117.99	75.67	68.96	65.45	68.53	74.67	98.91	124.98	124.06
Index (ARI)	105.2	100.9	98.7	111.6	110.8	112.7	116.7	119.3	103.7	114.3	130.7	120.9	118.5	128.2	129.6	111.1	112.1	111.3
Rank	3 of 5	4 of 6	4 of 6	2 of 6	3 of 6	2 of 6	1 of 6	1 of 6	4 of 6	2 of 6	1 of 6	1 of 6	1 of 6	1 of 6	1 of 6	2 of 6	2 of 6	2 of 6

Year To Date	Running 3 Month			Running 12 Month					
	2017	2018	2019	2017	2018	2019	2017	2018	2019
My Property	129.38	130.83	123.35	142.54	144.71	130.98	132.28	136.44	133.56
Competitive Set	108.36	110.80	100.83	125.67	128.70	116.54	113.45	116.61	109.62
Index (ARI)	119.4	118.1	122.3	113.4	112.4	112.4	116.6	117.0	121.8
Rank	1 of 6	1 of 6	1 of 6	2 of 6	2 of 6	2 of 6	1 of 6	1 of 6	1 of 6

% Chg	2018												2019					
	Jan	Feb	Mar	Apr	May	Jun	Jul	Aug	Sep	Oct	Nov	Dec	Jan	Feb	Mar	Apr	May	Jun
My Property	13.0	2.0	-16.4	-6.1	3.6	4.6	1.8	5.5	-3.7	2.0	-5.1	5.1	3.9	19.5	8.2	-10.7	-7.4	-11.3
Competitive Set	6.9	5.8	8.2	4.6	1.9	1.2	-0.3	-2.7	-3.3	-8.9	-4.5	-4.9	-7.7	-5.9	-17.5	-10.3	-8.5	-10.2
Index (ARI)	5.7	-3.6	-22.8	-10.2	1.7	3.3	2.1	8.4	-0.4	12.0	-0.7	10.5	12.6	27.0	31.2	-0.4	1.2	-1.3
Rank	1 of 5	4 of 6	6 of 6	6 of 6	2 of 6	2 of 6	1 of 6	1 of 6	5 of 6	1 of 6	5 of 6	1 of 6	1 of 5	1 of 6	1 of 6	4 of 6	3 of 6	4 of 6

Year To Date	Running 3 Month			Running 12 Month					
	2017	2018	2019	2017	2018	2019	2017	2018	2019
My Property	3.4	1.1	-5.7	2.7	1.5	-9.5	5.4	3.1	-2.1
Competitive Set	-0.7	2.3	-9.0	-0.4	2.4	-9.4	2.4	2.8	-6.0
Index (ARI)	4.2	-1.1	3.6	3.1	-0.9	0.0	2.9	0.4	4.1
Rank	1 of 6	3 of 6	3 of 6	2 of 6	3 of 6	3 of 6	2 of 6	3 of 6	2 of 6

RevPAR	2018												2019					
	Jan	Feb	Mar	Apr	May	Jun	Jul	Aug	Sep	Oct	Nov	Dec	Jan	Feb	Mar	Apr	May	Jun
My Property	2.41	12.65	31.53	66.85	99.36	103.46	89.63	82.72	106.08	75.75	19.02	10.29	5.95	9.77	20.31	52.98	90.65	77.95
Competitive Set	26.77	34.91	64.25	93.00	124.44	119.01	110.93	109.02	126.24	100.90	44.74	29.23	21.23	28.95	46.76	81.53	112.80	110.01
Index (RGI)	9.0	36.2	49.1	71.9	79.9	86.9	80.8	75.9	84.0	75.1	42.5	35.2	28.0	33.7	43.4	65.0	80.4	70.9
Rank	5 of 5	6 of 6	6 of 6	6 of 6	5 of 6	5 of 6	6 of 6	6 of 6	5 of 6	6 of 6	6 of 6	6 of 6	6 of 6	6 of 6	6 of 6	6 of 6	6 of 6	6 of 6

Year To Date	Running 3 Month			Running 12 Month					
	2017	2018	2019	2017	2018	2019	2017	2018	2019
My Property	61.74	53.02	43.23	102.59	89.99	74.04	75.05	65.40	53.79
Competitive Set	75.84	77.44	67.19	114.66	112.28	101.57	83.07	86.41	77.10
Index (RGI)	81.4	68.5	64.3	89.5	80.1	72.9	90.4	75.7	69.8
Rank	6 of 6	6 of 6	6 of 6	5 of 6	5 of 6	6 of 6	5 of 6	6 of 6	6 of 6

% Chg	2018												2019					
	Jan	Feb	Mar	Apr	May	Jun	Jul	Aug	Sep	Oct	Nov	Dec	Jan	Feb	Mar	Apr	May	Jun
My Property	-74.5	-19.4	-11.8	-22.3	-8.1	-8.8	-21.1	-16.5	-14.2	-20.1	-19.2	-2.6	147.0	-22.8	-35.6	-20.8	-8.8	-24.7
Competitive Set	40.9	2.1	14.1	-0.6	0.1	-5.3	-4.1	-5.8	-7.3	-15.3	-11.1	-14.2	-20.7	-17.1	-27.2	-12.3	-9.4	-7.6
Index (RGI)	-81.9	-21.0	-22.7	-21.8	-8.2	-3.7	-17.8	-11.3	-7.4	-5.6	-9.0	13.5	211.5	-6.9	-11.5	-9.6	0.6	-18.5
Rank	5 of 5	6 of 6	6 of 6	6 of 6	5 of 6	5 of 6	6 of 6	6 of 6	6 of 6	5 of 6	5 of 6	2 of 6	1 of 5	4 of 6	6 of 6	6 of 6	4 of 6	6 of 6

Year To Date	Running 3 Month			Running 12 Month					
	2017	2018	2019	2017	2018	2019	2017	2018	2019
My Property	0.3	-14.1	-18.4	0.4	-12.3	-17.7	1.0	-12.9	-17.8
Competitive Set	2.9	2.1	-13.2	10.1	-2.1	-9.5	6.7	4.0	-10.8
Index (RGI)	-2.5	-15.9	-6.0	-8.9	-10.4	-9.0	-5.4	-16.2	-7.8
Rank	4 of 6	6 of 6	5 of 6	5 of 6	6 of 6	6 of 6	4 of 6	6 of 6	6 of 6

The STR STAR Report is a publication of STR, Inc. and STR Global, Ltd., and is intended solely for use by paid subscribers. Reproduction or distribution of the STR STAR Report, in whole or part, without written permission is prohibited and subject to legal action. If you have received this report and are NOT a subscriber to the STR STAR Report, please contact us immediately. Source: 2019 STR, Inc. / STR Global, Ltd. trading as "STR".

Tab 5 - Response Report

Best Western East Zion Thunderbird Lodge Jct State Rte 9 & Hwy 89 Mount Carmel, UT 84755 Phone: (435) 648-2203
 STR # 3686 ChainID: 45027 MgtCo: None Owner: None
 For the Month of: June 2019 Date Created: July 18, 2019

This Year

Jun 16th - Father's Day

June 2019 (This Year)

Sun	Mon	Tue	Wed	Thu	Fri	Sat
						1
2	3	4	5	6	7	8
9	10	11	12	13	14	15
16	17	18	19	20	21	22
23	24	25	26	27	28	29
30						

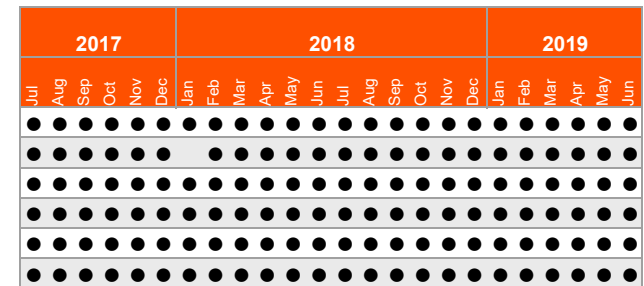
June 2018 (Last Year)

Sun	Mon	Tue	Wed	Thu	Fri	Sat
					1	2
3	4	5	6	7	8	9
10	11	12	13	14	15	16
17	18	19	20	21	22	23
24	25	26	27	28	29	30

Last Year

Jun 17th - Father's Day

STR#	Name	City, State	Zip	Phone	Rooms	Open Date
3686	Best Western East Zion Thunderbird Lodge	Mount Carmel, UT	84755	(435) 648-2203	61	196906
3681	Best Western Red Hills	Kanab, UT	84741-3417	(435) 644-2675	74	195806
30148	Quality Inn Kanab	Kanab, UT	84741-3829	(435) 644-8888	71	199406
57309	Holiday Inn Express & Suites Kanab	Kanab, UT	84741-3651	(435) 644-3100	79	200804
64568	Comfort Suites Kanab	Kanab, UT	84741-3416	(435) 644-8200	82	201511
64776	Hampton Inn Kanab	Kanab, UT	84741-3540	(435) 644-8282	81	201606
					448	



Data received:

- = Monthly Only
- = Monthly & Daily

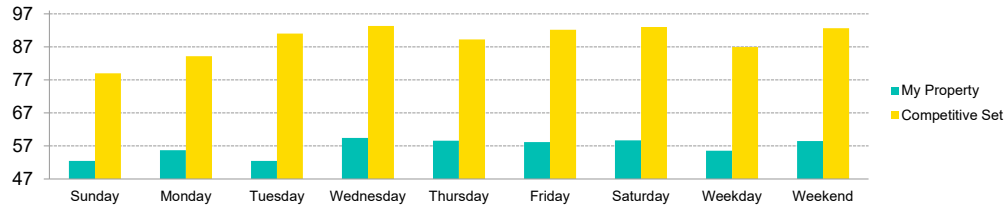
Tab 6 - Day of Week and Weekday/Weekend Report

Best Western East Zion Thunderbird Lodge Jct State Rte 9 & Hwy 89 Mount Carmel, UT 84755 Phone: (435) 648-2203

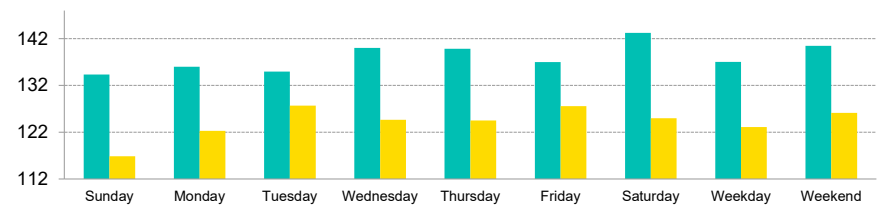
STR # 3686 ChainID: 45027 MgtCo: None Owner: None

For the Month of: June 2019 Date Created: July 18, 2019 Monthly Competitive Set Data Excludes Subject Property

Current Month Occupancy



Current Month ADR



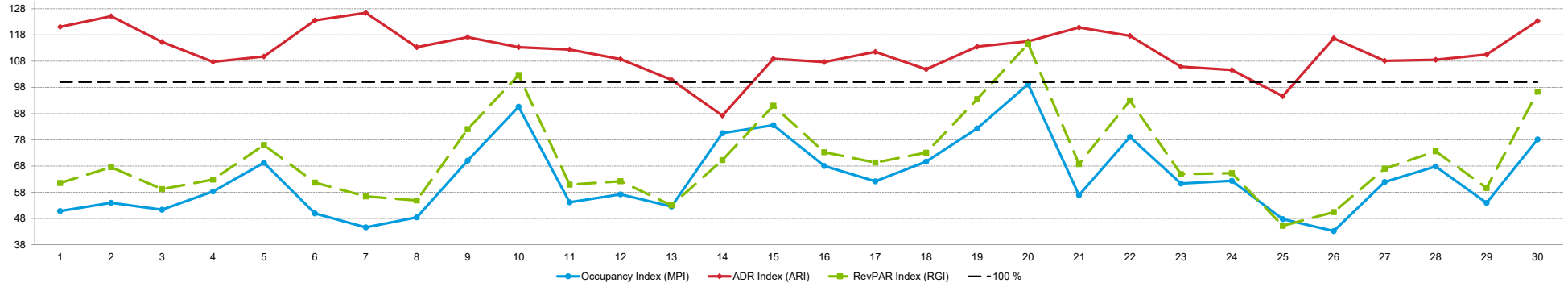
Day of Week	Time Period	Occupancy (%)			Average Daily Rate			RevPAR											
		My Property	Competitive Set	Index (MPI)	My Property	Competitive Set	Index (ARI)	My Property	Competitive Set	Index (RGI)									
Sunday	Current Month	52.5	-3.8	79.0	2.9	66.4	-6.5	134.31	-14.5	116.86	-11.2	114.9	-3.7	70.46	-17.7	92.34	-8.7	76.3	-9.9
	Year To Date	33.3	-12.2	57.6	-10.5	57.8	-1.9	121.39	-7.8	98.70	-7.8	123.0	0.0	40.41	-19.0	56.81	-17.4	71.1	-1.9
	Running 3 Month	53.0	-7.9	76.6	-3.3	69.1	-4.7	129.20	-10.5	112.54	-9.2	114.8	-1.5	68.43	-17.6	86.23	-12.2	79.4	-6.1
	Running 12 Month	36.3	-18.8	61.3	-11.0	59.3	-8.8	131.81	-5.7	106.70	-6.3	123.5	0.7	47.86	-23.4	65.38	-16.6	73.2	-8.2
Monday	Current Month	55.7	-19.5	84.2	-9.6	66.2	-11.0	135.99	-11.9	122.30	-14.0	111.2	2.5	75.80	-29.1	102.94	-22.3	73.6	-8.8
	Year To Date	33.5	-17.2	64.9	-11.6	51.6	-6.4	120.47	-6.9	98.70	-9.9	122.1	3.4	40.37	-22.9	64.07	-20.3	63.0	-3.2
	Running 3 Month	54.7	-14.2	84.8	-8.2	64.5	-6.6	125.24	-11.7	113.13	-12.2	110.7	0.6	68.54	-24.3	95.95	-19.4	71.4	-6.0
	Running 12 Month	37.2	-19.4	67.4	-9.4	55.2	-11.0	133.43	-2.1	108.39	-5.9	123.1	4.1	49.68	-21.1	73.07	-14.7	68.0	-7.4
Tuesday	Current Month	52.5	-19.0	91.0	2.0	57.6	-20.6	134.96	-13.2	127.67	-8.6	105.7	-5.0	70.80	-29.7	116.21	-6.7	60.9	-24.6
	Year To Date	32.5	-18.4	68.9	0.5	47.1	-18.8	119.34	-5.9	99.65	-11.1	119.8	5.8	38.75	-23.2	68.64	-10.7	56.5	-14.1
	Running 3 Month	55.1	-11.7	91.3	2.4	60.4	-13.8	123.83	-11.4	116.04	-10.2	106.7	-1.3	68.24	-21.8	105.92	-8.1	64.4	-14.9
	Running 12 Month	36.9	-22.4	72.3	-2.3	51.1	-20.6	132.36	-1.4	108.79	-7.7	121.7	6.8	48.90	-23.5	78.62	-9.8	62.2	-15.2
Wednesday	Current Month	59.4	-21.2	93.3	8.2	63.7	-27.1	140.00	-8.7	124.65	-11.2	112.3	2.8	83.20	-28.0	116.36	-3.9	71.5	-25.1
	Year To Date	31.4	-22.7	73.0	-0.4	43.0	-22.3	124.36	-3.8	98.64	-9.4	126.1	6.2	39.05	-25.6	72.03	-9.8	54.2	-17.5
	Running 3 Month	52.8	-14.3	94.8	7.8	55.8	-20.5	130.40	-9.1	116.51	-11.0	111.9	2.2	68.90	-22.1	110.39	-4.1	62.4	-18.8
	Running 12 Month	35.2	-26.7	75.4	-1.2	46.7	-25.8	135.62	0.9	108.70	-4.9	124.8	6.0	47.76	-26.1	81.98	-6.0	58.3	-21.4
Thursday	Current Month	58.6	-4.7	89.3	9.5	65.6	-12.9	139.84	-10.7	124.52	-9.3	112.3	-1.6	81.96	-14.9	111.17	-0.7	73.7	-14.3
	Year To Date	33.2	-17.7	64.9	-0.8	51.1	-17.0	126.11	-3.2	99.66	-9.9	126.5	7.4	41.82	-20.3	64.67	-10.6	64.7	-10.9
	Running 3 Month	56.0	-8.8	85.4	3.7	65.5	-12.1	133.07	-8.1	114.82	-9.6	115.9	1.6	74.51	-16.2	98.09	-6.2	76.0	-10.7
	Running 12 Month	40.2	-17.7	69.7	-2.2	57.7	-15.8	134.85	0.4	108.00	-6.7	124.9	7.6	54.27	-17.4	75.28	-8.8	72.1	-9.5
Friday	Current Month	58.2	-13.8	92.2	4.5	63.1	-17.5	136.99	-10.7	127.56	-8.1	107.4	-2.8	79.72	-23.1	117.59	-4.0	67.8	-19.9
	Year To Date	40.3	-3.8	70.0	-5.0	57.6	1.3	123.61	-4.9	105.35	-7.3	117.3	2.6	49.80	-8.5	73.73	-12.0	67.5	4.0
	Running 3 Month	61.2	-3.6	88.9	-1.7	68.8	-1.9	134.48	-7.7	122.46	-6.9	109.8	-0.9	82.25	-11.0	108.83	-8.5	75.6	-2.8
	Running 12 Month	47.6	-3.7	74.1	-4.4	64.2	0.7	129.88	-1.5	113.30	-3.9	114.6	2.5	61.79	-5.2	83.99	-8.1	73.6	3.2
Saturday	Current Month	58.7	-17.1	93.0	6.5	63.1	-22.2	143.23	-10.2	125.00	-8.0	114.6	-2.4	84.06	-25.6	116.28	-2.0	72.3	-24.1
	Year To Date	41.2	-3.4	67.1	-4.7	61.4	1.3	127.09	-7.9	104.69	-7.6	121.4	-0.3	52.33	-11.1	70.25	-11.9	74.5	1.0
	Running 3 Month	62.9	-3.3	88.3	-1.0	71.3	-2.3	138.96	-9.0	119.55	-7.1	116.2	-2.0	87.44	-12.0	105.58	-8.1	82.8	-4.3
	Running 12 Month	48.5	-4.2	72.3	-5.2	67.0	1.1	136.97	-4.9	112.87	-6.7	121.4	2.0	66.37	-8.8	81.64	-11.6	81.3	3.1
Weekday/Weekend	Current Month	55.6	-14.6	87.0	1.9	63.9	-16.2	137.02	-11.7	123.11	-11.1	111.3	-0.7	76.16	-24.6	107.07	-9.4	71.1	-16.8
	Year To Date	32.8	-17.7	65.9	-4.6	49.7	-13.8	122.33	-5.5	99.08	-9.7	123.5	4.6	40.08	-22.3	65.25	-13.8	61.4	-9.8
	Running 3 Month	54.3	-11.5	86.6	0.4	62.7	-11.8	128.34	-10.1	114.71	-10.5	111.9	0.4	69.72	-20.4	99.32	-10.1	70.2	-11.5
	Running 12 Month	37.2	-21.1	69.2	-5.2	53.7	-16.8	133.61	-1.6	108.16	-6.3	123.5	5.0	49.67	-22.3	74.83	-11.1	66.4	-12.6
Total	Current Month	56.4	-15.0	88.7	2.9	63.7	-17.4	138.09	-11.3	124.06	-10.2	111.3	-1.3	77.95	-24.7	110.01	-7.6	70.9	-18.5
	Year To Date	35.1	-13.5	66.6	-4.7	52.6	-9.3	123.35	-5.7	100.83	-9.0	122.3	3.6	43.23	-18.4	67.19	-13.2	64.3	-6.0
	Running 3 Month	56.5	-9.1	87.2	-0.1	64.9	-9.0	130.98	-9.5	116.54	-9.4	112.4	0.0	74.04	-17.7	101.57	-9.5	72.9	-9.0
	Running 12 Month	40.3	-16.0	70.3	-5.1	57.3	-11.5	133.56	-2.1	109.62	-6.0	121.8	4.1	53.79	-17.8	77.10	-10.8	69.8	-7.8

The STR STAR Report is a publication of STR, Inc. and STR Global, Ltd., and is intended solely for use by paid subscribers. Reproduction or distribution of the STR STAR Report, in whole or part, without written permission is prohibited and subject to legal action. If you have received this report and are NOT a subscriber to the STR STAR Report, please contact us immediately. Source: 2019 STR, Inc. / STR Global, Ltd. trading as "STR".

Tab 7 - Daily Data for the Month

Best Western East Zion Thunderbird Lodge Jct State Rte 9 & Hwy 89 Mount Carmel, UT 84755 Phone: (435) 648-2203
 STR # 3686 ChainID: 45027 MgtCo: None Owner: None
 For the Month of: June 2019 Date Created: July 18, 2019 Daily Competitive Set Data Excludes Subject Property

Daily Indexes for the Month of June



	Sa	Su	Mo	Tu	We	Th	Fr	Sa	Su	Mo	Tu	We	Th	Fr	Sa	Su	Mo	Tu	We	Th	Fr	Sa	Su	Mo	Tu	We	Th	Fr	Sa	Su
Occupancy (%)	June																													
My Property	47.5	39.3	45.9	54.1	70.5	44.3	37.7	47.5	59.0	73.8	50.8	54.1	49.2	80.3	80.3	60.7	55.7	63.9	77.0	86.9	54.1	70.5	47.5	47.5	41.0	36.1	54.1	60.7	47.5	55.7
Competitive Set	93.5	72.9	89.4	92.8	101.8	88.6	84.5	98.2	84.2	81.4	93.8	94.6	93.5	99.7	96.1	89.1	89.7	91.7	93.5	87.6	95.1	89.1	77.5	76.2	85.8	83.5	87.3	89.4	88.1	71.3
Index (MPI)	50.8	54.0	51.3	58.3	69.2	49.9	44.6	48.4	70.1	90.6	54.2	57.2	52.6	80.5	83.6	68.0	62.2	69.7	82.4	99.2	56.9	79.1	61.3	62.4	47.8	43.2	61.9	67.8	54.0	78.2

	Sa	Su	Mo	Tu	We	Th	Fr	Sa	Su	Mo	Tu	We	Th	Fr	Sa	Su	Mo	Tu	We	Th	Fr	Sa	Su	Mo	Tu	We	Th	Fr	Sa	Su
% Chg																														
My Property	-6.5	-40.0	-34.9	-23.3	4.9	-22.9	-36.1	-45.3	5.9	2.3	-38.0	-40.0	-14.3	63.3	11.4	19.4	-27.7	-4.9	-14.5	17.8	-26.7	-14.0	3.6	-17.1	4.2	-33.3	-5.7	5.7	-23.7	9.7
Competitive Set	17.9	9.7	-1.4	-0.6	14.9	32.4	-5.8	4.1	5.2	-17.8	6.5	17.7	-0.8	26.1	5.7	6.5	-7.7	6.6	2.5	5.3	13.6	8.8	0.7	-10.9	-4.0	-1.8	7.0	-1.7	-2.3	-20.7
Index (MPI)	-20.7	-45.3	-33.9	-22.8	-8.7	-41.7	-32.2	-47.4	0.7	24.4	-41.8	-49.0	-13.6	29.5	5.4	12.1	-21.6	-10.8	-16.7	11.9	-35.4	-21.0	2.9	-7.0	8.6	-32.1	-11.9	7.5	-21.9	38.3

	Sa	Su	Mo	Tu	We	Th	Fr	Sa	Su	Mo	Tu	We	Th	Fr	Sa	Su	Mo	Tu	We	Th	Fr	Sa	Su	Mo	Tu	We	Th	Fr	Sa	Su
ADR	June																													
My Property	147.36	142.54	144.21	140.11	140.15	146.01	144.72	144.90	137.56	136.35	143.37	135.04	133.42	131.23	150.23	132.82	139.11	135.23	143.59	146.08	148.82	141.42	126.81	123.86	117.33	139.50	130.62	129.27	128.30	133.10
Competitive Set	121.71	113.92	125.04	130.03	127.64	118.18	114.45	127.86	117.42	120.32	127.54	124.17	132.25	150.43	137.91	123.37	124.70	128.89	126.44	126.41	123.14	120.20	119.78	118.36	123.96	119.53	120.78	119.12	116.08	107.92
Index (ARI)	121.1	125.1	115.3	107.8	109.8	123.5	126.4	113.3	117.2	113.3	112.4	108.8	100.9	87.2	108.9	107.7	111.6	104.9	113.6	115.6	120.8	117.7	105.9	104.6	94.7	116.7	108.1	108.5	110.5	123.3

	Sa	Su	Mo	Tu	We	Th	Fr	Sa	Su	Mo	Tu	We	Th	Fr	Sa	Su	Mo	Tu	We	Th	Fr	Sa	Su	Mo	Tu	We	Th	Fr	Sa	Su
% Chg																														
My Property	-7.5	-7.8	-7.7	-6.6	-4.5	-6.0	-11.2	-10.9	-15.0	-15.0	-11.1	-14.0	-14.9	-18.8	-3.9	-12.4	-8.2	-14.3	-9.9	-9.4	-9.4	-14.0	-21.1	-16.6	-21.1	-4.1	-14.1	-17.5	-15.8	-13.4
Competitive Set	-6.5	-14.3	-13.8	-10.7	-8.2	-10.0	-19.4	-9.4	-7.7	-16.7	-7.5	-8.7	-5.4	10.1	-0.4	-9.9	-12.9	-6.7	-13.9	-11.3	-7.3	-9.3	-7.5	-12.8	-9.2	-13.9	-9.8	-12.0	-14.5	-22.4
Index (ARI)	-1.1	7.5	7.0	4.6	4.0	4.5	10.2	-1.7	-7.9	2.1	-3.9	-5.8	-10.1	-26.2	-3.6	-2.8	5.4	-8.2	4.7	2.2	-2.3	-5.2	-14.7	-4.4	-13.1	11.4	-4.8	-6.2	-1.6	11.6

	Sa	Su	Mo	Tu	We	Th	Fr	Sa	Su	Mo	Tu	We	Th	Fr	Sa	Su	Mo	Tu	We	Th	Fr	Sa	Su	Mo	Tu	We	Th	Fr	Sa	Su
RevPAR	June																													
My Property	70.06	56.08	66.20	75.80	98.79	64.63	54.57	68.89	81.18	100.58	72.86	73.06	65.62	105.42	120.68	80.57	77.53	86.46	110.63	126.92	80.51	99.69	60.29	58.88	48.09	50.31	70.67	78.41	61.00	74.18
Competitive Set	113.85	83.01	111.79	120.62	129.95	104.74	96.71	125.55	98.91	97.94	119.63	117.43	123.71	150.05	132.56	109.98	111.81	118.23	118.28	110.74	117.10	107.15	92.85	90.22	106.35	99.77	105.49	106.50	102.28	76.97
Index (RGI)	61.5	67.6	59.2	62.8	76.0	61.7	56.4	54.9	82.1	102.7	60.9	62.2	53.0	70.3	91.0	73.3	69.3	73.1	93.5	114.6	68.8	93.0	64.9	65.3	45.2	50.4	67.0	73.6	59.6	96.4

	Sa	Su	Mo	Tu	We	Th	Fr	Sa	Su	Mo	Tu	We	Th	Fr	Sa	Su	Mo	Tu	We	Th	Fr	Sa	Su	Mo	Tu	We	Th	Fr	Sa	Su
% Chg																														
My Property	-13.5	-44.7	-39.9	-28.3	0.2	-27.5	-43.3	-51.2	-10.0	-13.0	-44.9	-48.4	-27.1	32.6	7.0	4.6	-33.6	-18.5	-23.0	6.7	-33.6	-26.0	-18.3	-30.9	-17.8	-36.0	-19.0	-12.7	-35.8	-5.0
Competitive Set	10.3	-5.9	-15.0	-11.2	5.5	19.2	-24.1	-5.7	-3.0	-31.5	-1.6	7.4	-6.2	38.9	5.3	-4.0	-19.6	-0.5	-11.7	-6.6	5.3	-1.3	-6.9	-22.3	-12.9	-15.5	-3.5	-13.5	-16.5	-38.4
Index (RGI)	-21.5	-41.2	-29.3	-19.3	-5.0	-39.2	-25.3	-48.3	-7.3	27.0	-44.0	-52.0	-22.3	-4.5	1.6	9.0	-17.4	-18.1	-12.8	14.3	-36.9	-25.1	-12.2	-11.1	-5.6	-24.4	-16.1	0.9	-23.1	54.3

The STR STAR Report is a publication of STR, Inc. and STR Global, Ltd., and is intended solely for use by paid subscribers. Reproduction or distribution of the STR STAR Report, in whole or part, without written permission is prohibited and subject to legal action. If you have received this report and are NOT a subscriber to the STR STAR Report, please contact us immediately. Source: 2019 STR, Inc. / STR Global, Ltd. trading as "STR".