

Tab 2 - Monthly Performance at a Glance - My Property vs. Competitive Set

Best Western East Zion Thunderbird Lodge Jct State Rte 9 & Hwy 89 Mount Carmel, UT 84755 Phone: (435) 648-2203

STR # 3686 ChainID: 45027 MgtCo: None Owner: None

For the Month of: January 2019 Date Created: February 20, 2019 Monthly Competitive Set Data Excludes Subject Property

January 2019

	Occupancy (%)			ADR			RevPAR		
	My Prop	Comp Set	Index (MPI)	My Prop	Comp Set	Index (ARI)	My Prop	Comp Set	Index (RGI)
Current Month	7.7	32.4	23.6	77.54	65.45	118.5	5.95	21.23	28.0
Year To Date	7.7	32.4	23.6	77.54	65.45	118.5	5.95	21.23	28.0
Running 3 Month	13.0	44.5	29.3	89.75	71.01	126.4	11.69	31.59	37.0
Running 12 Month	43.4	71.5	60.7	135.93	114.28	118.9	58.95	81.72	72.1

January 2019 vs. 2018 Percent Change (%)

	Occupancy			ADR			RevPAR		
	My Prop	Comp Set	Index (MPI)	My Prop	Comp Set	Index (ARI)	My Prop	Comp Set	Index (RGI)
Current Month	137.7	-14.1	176.7	3.9	-7.7	12.6	147.0	-20.7	211.5
Year To Date	137.7	-14.1	176.7	3.9	-7.7	12.6	147.0	-20.7	211.5
Running 3 Month	0.7	-9.7	11.5	-3.6	-5.2	1.7	-2.9	-14.4	13.4
Running 12 Month	-14.2	-4.6	-10.1	-0.6	-0.8	0.2	-14.7	-5.3	-10.0

Tab 3 - STAR Summary - My Property vs. Comp Set and Industry Segments

Best Western East Zion Thunderbird Lodge Jct State Rte 9 & Hwy 89 Mount Carmel, UT 84755 Phone: (435) 648-2203

STR # 3686 ChainID: 45027 MgtCo: None Owner: None

For the Month of: January 2019 Date Created: February 20, 2019 Monthly Competitive Set Data Excludes Subject Property

Best Western East Zion Thunderbird Lodge
Market: Utah Area
Market Class: Midscale Class
Submarket: Utah Regional
Submarket Scale: Midscale Chains
Competitive Set: Competitors

Occupancy (%)							
Current Month	% Chg	Year to Date	% Chg	Running 3 Month	% Chg	Running 12 Month	% Chg
7.7	137.7	7.7	137.7	13.0	0.7	43.4	-14.2
40.5	1.9	40.5	1.9	42.2	-0.7	58.9	-2.1
35.8	-1.6	35.8	-1.6	39.2	-0.5	58.0	-2.9
37.8	5.9	37.8	5.9	39.8	3.0	57.0	-0.6
37.2	2.3	37.2	2.3	43.2	-0.5	62.8	-3.9
32.4	-14.1	32.4	-14.1	44.5	-9.7	71.5	-4.6

Supply			
Month % Chg	YTD % Chg	Run 3 Mon % Chg	Run 12 Mon % Chg
0.0	0.0	-1.1	-0.3
4.5	4.5	4.1	4.1
2.4	2.4	0.7	0.9
1.1	1.1	0.9	1.4
-0.7	-0.7	1.4	6.6
0.0	0.0	0.0	0.0

Best Western East Zion Thunderbird Lodge
Market: Utah Area
Market Class: Midscale Class
Submarket: Utah Regional
Submarket Scale: Midscale Chains
Competitive Set: Competitors

Average Daily Rate							
Current Month	% Chg	Year to Date	% Chg	Running 3 Month	% Chg	Running 12 Month	% Chg
77.54	3.9	77.54	3.9	89.75	-3.6	135.93	-0.6
184.86	3.2	184.86	3.2	144.38	2.2	134.40	1.3
126.92	3.1	126.92	3.1	105.47	0.9	110.41	0.3
251.88	3.9	251.88	3.9	184.21	3.6	158.41	3.6
94.40	-0.3	94.40	-0.3	91.92	0.2	119.98	0.5
65.45	-7.7	65.45	-7.7	71.01	-5.2	114.28	-0.8

Demand			
Month % Chg	YTD % Chg	Run 3 Mon % Chg	Run 12 Mon % Chg
137.7	137.7	-0.4	-14.5
6.5	6.5	3.4	1.9
0.8	0.8	0.2	-2.0
7.1	7.1	4.0	0.8
1.6	1.6	0.9	2.4
-14.1	-14.1	-9.7	-4.6

Best Western East Zion Thunderbird Lodge
Market: Utah Area
Market Class: Midscale Class
Submarket: Utah Regional
Submarket Scale: Midscale Chains
Competitive Set: Competitors

RevPAR							
Current Month	% Chg	Year to Date	% Chg	Running 3 Month	% Chg	Running 12 Month	% Chg
5.95	147.0	5.95	147.0	11.69	-2.9	58.95	-14.7
74.93	5.1	74.93	5.1	60.88	1.5	79.23	-0.8
45.43	1.5	45.43	1.5	41.35	0.4	64.05	-2.6
95.30	10.0	95.30	10.0	73.33	6.8	90.25	3.0
35.09	2.0	35.09	2.0	39.68	-0.3	75.39	-3.4
21.23	-20.7	21.23	-20.7	31.59	-14.4	81.72	-5.3

Revenue			
Month % Chg	YTD % Chg	Run 3 Mon % Chg	Run 12 Mon % Chg
147.0	147.0	-4.0	-15.0
9.9	9.9	5.7	3.2
3.9	3.9	1.2	-1.7
11.3	11.3	7.8	4.4
1.3	1.3	1.1	2.9
-20.7	-20.7	-14.4	-5.3

Market: Utah Area
Market Class: Midscale Class
Submarket: Utah Regional
Submarket Scale: Midscale Chains
Competitive Set: Competitors

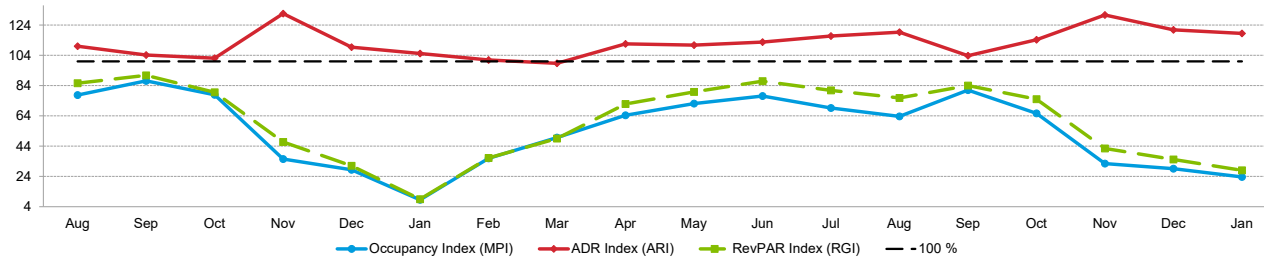
Census/Sample - Properties & Rooms					
Census		Sample		Sample %	
Properties	Rooms	Properties	Rooms	Rooms	
428	29945	244	20841	69.6	
65	4255	42	2930	68.9	
299	19441	141	11671	60.0	
70	5781	70	5781	100.0	
5	387	5	387	100.0	

Pipeline			
Market: Utah Area			
Under Construction		Planning	
Properties	Rooms	Properties	Rooms
10	884	29	2781
See Help page for pipeline definitions.			

Tab 4 - Competitive Set Report

Best Western East Zion Thunderbird Lodge Jct State Rte 9 & Hwy 89 Mount Carmel, UT 84755 Phone: (435) 648-2203
 STR # 3686 ChainID: 45027 MgtCo: None Owner: None
 For the Month of: January 2019 Date Created: February 20, 2019 Monthly Competitive Set Data Excludes Subject Property

Monthly Indexes



RevPAR Percent Change



Occupancy (%)	2017					2018												2019	Year To Date			Running 3 Month			Running 12 Month		
	Aug	Sep	Oct	Nov	Dec	Jan	Feb	Mar	Apr	May	Jun	Jul	Aug	Sep	Oct	Nov	Dec	Jan	2017	2018	2019	2017	2018	2019	2017	2018	2019
My Property	66.8	82.3	71.7	22.6	13.3	3.2	17.2	35.3	54.3	65.7	66.4	57.6	52.9	73.3	56.2	19.2	12.3	7.7	14.3	3.2	7.7	24.1	12.9	13.0	57.7	50.6	43.4
Competitive Set	85.9	94.5	92.0	63.5	47.0	37.8	47.9	71.0	84.3	91.1	86.2	83.2	83.2	90.5	85.5	59.1	42.4	32.4	28.6	37.8	32.4	42.6	49.3	44.5	71.6	74.9	71.5
Index (MPI)	77.8	87.1	77.9	35.5	28.4	8.5	35.9	49.7	64.4	72.1	77.1	69.2	63.6	81.0	65.7	32.5	29.1	23.6	49.9	8.5	23.6	56.6	26.3	29.3	80.6	67.5	60.7
Rank	6 of 6	6 of 6	6 of 6	6 of 6	6 of 6	5 of 5	6 of 6	6 of 6	6 of 6	6 of 6	6 of 6	6 of 6	6 of 6	6 of 6	6 of 6	6 of 6	6 of 6	6 of 6	6 of 6	5 of 5	6 of 6	6 of 6	6 of 6	6 of 6	6 of 6	6 of 6	6 of 6
% Chg																											
My Property	-7.1	-10.2	-21.3	-33.7	-45.2	-77.4	-21.0	5.5	-17.2	-11.3	-12.8	-22.5	-20.8	-10.9	-21.7	-14.8	-7.3	137.7	25.0	-77.4	137.7	7.0	-46.3	0.7	-9.6	-12.3	-14.2
Competitive Set	3.0	-0.2	1.4	6.0	18.2	31.8	-3.5	5.4	-5.0	-1.8	-6.4	-3.8	-3.2	-4.2	-7.1	-6.9	-9.8	-14.1	-1.3	31.8	-14.1	11.1	15.7	-9.7	-0.1	4.7	-4.6
Index (MPI)	-9.8	-10.1	-22.4	-37.4	-53.7	-82.9	-18.1	0.1	-12.8	-9.7	-6.8	-19.5	-18.2	-7.1	-15.7	-8.4	2.7	176.7	26.7	-82.9	176.7	-3.7	-53.6	11.5	-9.5	-16.3	-10.1
Rank	6 of 6	6 of 6	6 of 6	6 of 6	6 of 6	5 of 5	5 of 6	4 of 6	6 of 6	6 of 6	5 of 6	6 of 6	6 of 6	6 of 6	5 of 6	2 of 6	1 of 5	2 of 5	5 of 5	1 of 5	3 of 5	6 of 6	2 of 6	5 of 5	6 of 6	6 of 6	
ADR																											
My Property	148.17	150.17	132.19	104.25	79.31	74.62	73.49	89.39	123.07	151.29	155.69	155.64	156.27	144.65	134.88	98.89	83.36	77.54	66.04	74.62	77.54	72.56	93.10	89.75	130.21	136.72	135.93
Competitive Set	134.73	144.13	129.48	79.24	72.52	70.92	72.83	90.56	110.30	136.59	138.09	133.35	131.04	139.43	117.99	75.67	68.96	65.45	66.36	70.92	65.45	72.99	74.93	71.01	113.96	115.15	114.28
Index (ARI)	110.0	104.2	102.1	131.6	109.4	105.2	100.9	98.7	111.6	110.8	112.7	116.7	119.3	103.7	114.3	130.7	120.9	118.5	99.5	105.2	118.5	99.4	124.3	126.4	114.3	118.7	118.9
Rank	2 of 6	4 of 6	4 of 6	1 of 6	2 of 6	3 of 5	4 of 6	4 of 6	2 of 6	3 of 6	2 of 6	1 of 6	1 of 6	4 of 6	2 of 6	1 of 6	1 of 6	1 of 6	4 of 6	3 of 5	1 of 6	4 of 6	1 of 6	1 of 6	1 of 6	1 of 6	1 of 6
% Chg																											
My Property	-0.7	-1.2	4.8	21.2	36.3	13.0	2.0	-16.4	-6.1	3.6	4.6	1.8	5.5	-3.7	2.0	-5.1	5.1	3.9	4.4	13.0	3.9	3.1	28.3	-3.6	11.4	5.0	-0.6
Competitive Set	3.1	2.5	9.9	0.8	4.2	6.9	5.8	8.2	4.6	1.9	1.2	-0.3	-2.7	-3.3	-8.9	-4.5	-4.9	-7.7	-1.4	6.9	-7.7	0.6	2.7	-5.2	6.1	1.0	-0.8
Index (ARI)	-3.7	-3.5	-4.6	20.3	30.8	5.7	-3.6	-22.8	-10.2	1.7	3.3	2.1	8.4	-0.4	12.0	-0.7	10.5	12.6	5.9	5.7	12.6	2.5	25.0	1.7	5.0	3.9	0.2
Rank	4 of 6	5 of 6	5 of 6	1 of 6	1 of 6	1 of 5	4 of 6	6 of 6	6 of 6	2 of 6	2 of 6	1 of 6	1 of 6	5 of 6	1 of 6	5 of 6	1 of 6	1 of 5	1 of 5	1 of 5	1 of 5	1 of 5	1 of 6	4 of 6	2 of 5	1 of 6	3 of 6
RevPAR																											
My Property	99.04	123.67	94.79	23.53	10.57	2.41	12.65	31.53	66.85	99.36	103.46	89.63	82.72	106.08	75.75	19.02	10.29	5.95	9.43	2.41	5.95	17.49	12.04	11.69	75.11	69.13	58.95
Competitive Set	115.76	136.21	119.18	50.34	34.07	26.77	34.91	64.25	93.00	124.44	119.01	110.93	109.02	126.24	100.90	44.74	29.23	21.23	19.00	26.77	21.23	31.09	36.92	31.59	81.54	86.27	81.72
Index (RGI)	85.6	90.8	79.5	46.7	31.0	9.0	36.2	49.1	71.9	79.9	86.9	80.8	75.9	84.0	75.1	42.5	35.2	28.0	49.6	9.0	28.0	56.3	32.6	37.0	92.1	80.1	72.1
Rank	5 of 6	5 of 6	5 of 6	6 of 6	6 of 6	5 of 5	6 of 6	6 of 6	6 of 6	5 of 6	5 of 6	6 of 6	6 of 6	5 of 6	6 of 6	6 of 6	6 of 6	6 of 6	6 of 6	5 of 5	6 of 6	6 of 6	6 of 6	6 of 6	4 of 6	6 of 6	6 of 6
% Chg																											
My Property	-7.7	-11.3	-17.4	-19.6	-25.3	-74.5	-19.4	-11.8	-22.3	-8.1	-8.8	-21.1	-16.5	-14.2	-20.1	-19.2	-2.6	147.0	30.6	-74.5	147.0	10.4	-31.1	-2.9	0.7	-8.0	-14.7
Competitive Set	6.2	2.3	11.5	6.8	23.2	40.9	2.1	14.1	-0.6	0.1	-5.3	-4.1	-5.8	-7.3	-15.3	-11.1	-14.2	-20.7	-2.7	40.9	-20.7	11.8	18.8	-14.4	6.0	5.8	-5.3
Index (RGI)	-13.1	-13.3	-25.9	-24.8	-39.4	-81.9	-21.0	-22.7	-21.8	-8.2	-3.7	-17.8	-11.3	-7.4	-5.6	-9.0	13.5	211.5	34.2	-81.9	211.5	-1.3	-42.0	13.4	-5.0	-13.0	-10.0
Rank	5 of 6	6 of 6	6 of 6	6 of 6	6 of 6	5 of 5	6 of 6	6 of 6	6 of 6	5 of 6	5 of 6	6 of 6	6 of 6	6 of 6	5 of 6	5 of 6	2 of 6	1 of 5	2 of 5	5 of 5	1 of 5	2 of 5	6 of 6	2 of 6	4 of 5	6 of 6	6 of 6

The STR STAR Report is a publication of STR, Inc. and STR Global, Ltd., and is intended solely for use by paid subscribers. Reproduction or distribution of the STR STAR Report, in whole or part, without written permission is prohibited and subject to legal action. If you have received this report and are NOT a subscriber to the STR STAR Report, please contact us immediately. Source: 2019 STR, Inc. / STR Global, Ltd. trading as "STR".

Tab 5 - Response Report

Best Western East Zion Thunderbird Lodge Jct State Rte 9 & Hwy 89 Mount Carmel, UT 84755 Phone: (435) 648-2203
 STR # 3686 ChainID: 45027 MgtCo: None Owner: None
 For the Month of: January 2019 Date Created: February 20, 2019

This Year

Jan 1st - New Year's Day
 Jan 21st - Martin Luther King Day

January 2019 (This Year)

Sun	Mon	Tue	Wed	Thu	Fri	Sat
		1	2	3	4	5
6	7	8	9	10	11	12
13	14	15	16	17	18	19
20	21	22	23	24	25	26
27	28	29	30	31		

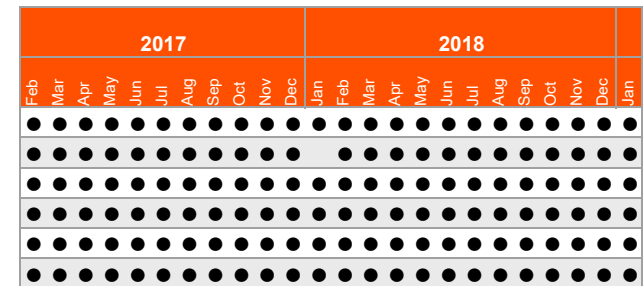
January 2018 (Last Year)

Sun	Mon	Tue	Wed	Thu	Fri	Sat
	1	2	3	4	5	6
7	8	9	10	11	12	13
14	15	16	17	18	19	20
21	22	23	24	25	26	27
28	29	30	31			

Last Year

Jan 1st - New Year's Day
 Jan 15th - Martin Luther King Day

STR#	Name	City, State	Zip	Phone	Rooms	Open Date
3686	Best Western East Zion Thunderbird Lodge	Mount Carmel, UT	84755	(435) 648-2203	61	196906
3681	Best Western Red Hills	Kanab, UT	84741-3417	(435) 644-2675	74	195806
30148	Quality Inn Kanab	Kanab, UT	84741-3829	(435) 644-8888	71	199406
57309	Holiday Inn Express & Suites Kanab	Kanab, UT	84741-3651	(435) 644-3100	79	200804
64568	Comfort Suites Kanab	Kanab, UT	84741-3416	(435) 644-8200	82	201511
64776	Hampton Inn Kanab	Kanab, UT	84741-3540	(435) 644-8282	81	201606
					448	



Data received:

- = Monthly Only
- = Monthly & Daily

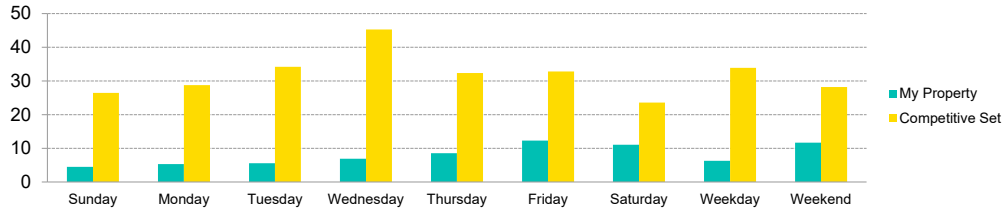
Tab 6 - Day of Week and Weekday/Weekend Report

Best Western East Zion Thunderbird Lodge Jct State Rte 9 & Hwy 89 Mount Carmel, UT 84755 Phone: (435) 648-2203

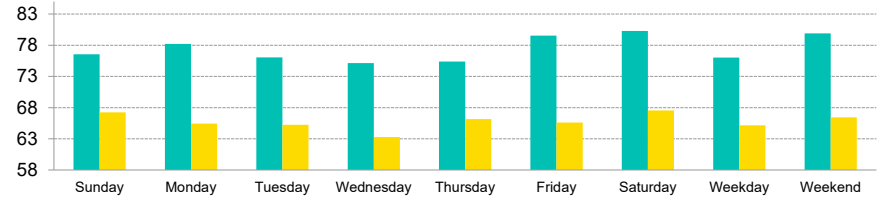
STR # 3686 ChainID: 45027 MgtCo: None Owner: None

For the Month of: January 2019 Date Created: February 20, 2019 Monthly Competitive Set Data Excludes Subject Property

Current Month Occupancy



Current Month ADR



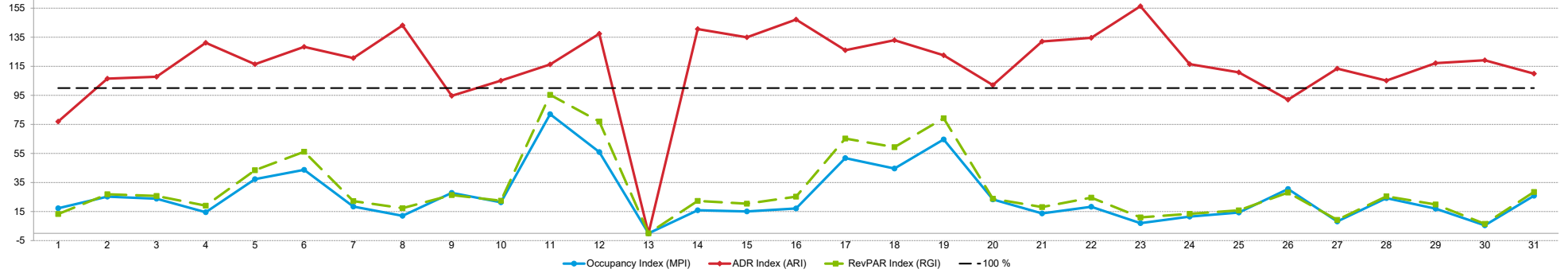
Day of Week	Time Period	Occupancy (%)			Average Daily Rate			RevPAR											
		My Property	Competitive Set	Index (MPI)	My Property	Competitive Set	Index (ARI)	My Property	Competitive Set	Index (RGI)									
Sunday	Current Month	4.5	450.0	26.4	-24.2	17.1	625.2	76.54	33.1	67.23	-3.1	113.8	37.4	3.45	632.2	17.76	-26.5	19.4	896.2
	Year To Date	4.5	450.0	26.4	-24.2	17.1	625.2	76.54	33.1	67.23	-3.1	113.8	37.4	3.45	632.2	17.76	-26.5	19.4	896.2
	Running 3 Month	11.7	34.8	36.4	-14.0	32.2	56.7	90.55	-9.5	69.89	-2.2	129.6	-7.5	10.62	22.0	25.44	-15.9	41.7	44.9
	Running 12 Month	38.9	-15.0	63.9	-9.1	60.8	-6.5	135.85	-4.1	110.78	-2.3	122.6	-1.8	52.81	-18.4	70.82	-11.2	74.6	-8.2
Monday	Current Month	5.3	47.7	28.7	-37.1	18.5	135.0	78.22	-4.9	65.44	-5.5	119.5	0.6	4.17	40.5	18.81	-40.6	22.2	136.5
	Year To Date	5.3	47.7	28.7	-37.1	18.5	135.0	78.22	-4.9	65.44	-5.5	119.5	0.6	4.17	40.5	18.81	-40.6	22.2	136.5
	Running 3 Month	7.3	-6.5	38.1	-21.4	19.2	19.0	91.02	-6.0	69.67	-3.3	130.6	-2.7	6.66	-12.0	26.55	-24.0	25.1	15.7
	Running 12 Month	41.4	-13.5	70.7	-0.8	58.6	-12.8	136.36	2.0	114.34	0.7	119.3	1.3	56.49	-11.7	80.87	-0.2	69.8	-11.6
Tuesday	Current Month	5.6	70.0	34.2	-9.3	16.3	87.3	76.04	-9.4	65.24	-10.5	116.6	1.2	4.24	54.0	22.32	-18.8	19.0	89.6
	Year To Date	5.6	70.0	34.2	-9.3	16.3	87.3	76.04	-9.4	65.24	-10.5	116.6	1.2	4.24	54.0	22.32	-18.8	19.0	89.6
	Running 3 Month	9.2	2.8	48.1	0.5	19.1	2.3	95.45	-1.8	70.33	-6.7	135.7	5.3	8.79	1.0	33.86	-6.3	26.0	7.8
	Running 12 Month	40.8	-20.6	71.7	-6.2	56.9	-15.4	134.50	0.4	114.60	-1.0	117.4	1.5	54.91	-20.3	82.22	-7.1	66.8	-14.1
Wednesday	Current Month	6.9	162.5	45.3	-13.3	15.2	202.6	75.12	7.6	63.29	-8.0	118.7	16.9	5.17	182.3	28.65	-20.2	18.1	253.8
	Year To Date	6.9	162.5	45.3	-13.3	15.2	202.6	75.12	7.6	63.29	-8.0	118.7	16.9	5.17	182.3	28.65	-20.2	18.1	253.8
	Running 3 Month	7.9	-40.5	50.4	-13.9	15.8	-30.8	88.07	-6.6	69.65	-5.9	126.5	-0.7	7.00	-44.4	35.08	-19.1	19.9	-31.3
	Running 12 Month	40.2	-19.3	74.9	-2.5	53.7	-17.2	136.20	2.1	113.73	1.5	119.8	0.5	54.79	-17.7	85.19	-1.0	64.3	-16.8
Thursday	Current Month	8.5	593.3	32.4	3.1	26.3	572.3	75.38	16.6	66.17	-14.4	113.9	36.2	6.43	708.3	21.41	-11.7	30.0	815.3
	Year To Date	8.5	593.3	32.4	3.1	26.3	572.3	75.38	16.6	66.17	-14.4	113.9	36.2	6.43	708.3	21.41	-11.7	30.0	815.3
	Running 3 Month	12.6	-14.5	46.7	-2.4	27.0	-12.4	91.99	-5.0	72.78	-8.4	126.4	3.7	11.60	-18.8	33.97	-10.6	34.1	-9.2
	Running 12 Month	43.8	-14.9	69.3	-5.3	63.1	-10.1	135.10	-1.6	112.22	-1.8	120.4	0.2	59.12	-16.3	77.80	-7.1	76.0	-9.9
Friday	Current Month	12.3	172.7	32.8	4.9	37.5	160.0	79.55	31.7	65.61	-6.2	121.2	40.3	9.78	259.2	21.53	-1.6	45.4	264.9
	Year To Date	12.3	172.7	32.8	4.9	37.5	160.0	79.55	31.7	65.61	-6.2	121.2	40.3	9.78	259.2	21.53	-1.6	45.4	264.9
	Running 3 Month	24.6	6.6	48.1	-8.2	51.1	16.1	84.58	-0.6	72.73	-4.7	116.3	4.3	20.80	5.9	35.01	-12.5	59.4	21.0
	Running 12 Month	49.0	-7.5	76.1	-2.6	64.3	-5.0	132.02	-0.7	116.93	0.4	112.9	-1.2	64.64	-8.2	88.99	-2.2	72.6	-6.1
Saturday	Current Month	11.1	68.8	23.6	-7.7	46.9	82.8	80.28	0.7	67.55	-6.2	118.8	7.3	8.88	69.9	15.93	-13.4	55.8	96.2
	Year To Date	11.1	68.8	23.6	-7.7	46.9	82.8	80.28	0.7	67.55	-6.2	118.8	7.3	8.88	69.9	15.93	-13.4	55.8	96.2
	Running 3 Month	17.8	28.2	43.5	-6.9	40.9	37.7	92.06	-0.1	71.48	-5.5	128.8	5.8	16.37	28.1	31.06	-12.0	52.7	45.7
	Running 12 Month	49.5	-9.5	73.8	-5.4	67.1	-4.3	141.16	-1.9	116.78	-2.8	120.9	1.0	69.91	-11.2	86.21	-8.1	81.1	-3.4
Weekday/Weekend	Current Month	6.3	158.8	33.9	-17.3	18.5	213.0	76.01	-1.1	65.17	-8.1	116.6	7.7	4.77	156.1	22.10	-24.0	21.6	237.1
	Year To Date	6.3	158.8	33.9	-17.3	18.5	213.0	76.01	-1.1	65.17	-8.1	116.6	7.7	4.77	156.1	22.10	-24.0	21.6	237.1
	Running 3 Month	9.8	-9.2	44.0	-10.5	22.2	1.4	91.51	-5.4	70.54	-5.3	129.7	-0.1	8.93	-14.2	31.02	-15.3	28.8	1.3
	Running 12 Month	41.0	-16.7	70.1	-4.8	58.5	-12.5	135.59	-0.2	113.19	-0.5	119.8	0.3	55.62	-16.9	79.37	-5.3	70.1	-12.3
Total	Current Month	11.7	111.1	28.2	-0.8	41.4	112.7	79.89	11.2	66.42	-6.3	120.3	18.6	9.33	134.7	18.73	-7.0	49.8	152.3
	Year To Date	11.7	111.1	28.2	-0.8	41.4	112.7	79.89	11.2	66.42	-6.3	120.3	18.6	9.33	134.7	18.73	-7.0	49.8	152.3
	Running 3 Month	21.2	14.7	45.8	-7.6	46.3	24.1	87.72	0.0	72.14	-5.1	121.6	5.3	18.58	14.7	33.04	-12.3	56.3	30.7
	Running 12 Month	49.2	-8.5	75.0	-4.0	65.7	-4.7	136.61	-1.4	116.85	-1.2	116.9	-0.2	67.27	-9.8	87.60	-5.2	76.8	-4.9

The STR STAR Report is a publication of STR, Inc. and STR Global, Ltd., and is intended solely for use by paid subscribers. Reproduction or distribution of the STR STAR Report, in whole or part, without written permission is prohibited and subject to legal action. If you have received this report and are NOT a subscriber to the STR STAR Report, please contact us immediately. Source: 2019 STR, Inc. / STR Global, Ltd. trading as "STR".

Tab 7 - Daily Data for the Month

Best Western East Zion Thunderbird Lodge Jct State Rte 9 & Hwy 89 Mount Carmel, UT 84755 Phone: (435) 648-2203
 STR # 3686 ChainID: 45027 MgtCo: None Owner: None
 For the Month of: January 2019 Date Created: February 20, 2019 Daily Competitive Set Data Excludes Subject Property

Daily Indexes for the Month of January



Occupancy (%)	January																														
	Tu	We	Th	Fr	Sa	Su	Mo	Tu	We	Th	Fr	Sa	Su	Mo	Tu	We	Th	Fr	Sa	Su	Mo	Tu	We	Th	Fr	Sa	Su	Mo	Tu	We	Th
My Property	6.6	13.1	8.2	4.9	8.2	6.6	3.3	3.3	8.2	4.9	24.6	9.8	0.0	3.3	3.3	6.6	13.1	14.8	18.0	8.2	4.9	6.6	3.3	3.3	4.9	8.2	3.3	9.8	8.2	3.3	13.1
Competitive Set	38.0	51.9	34.4	33.9	22.0	15.0	17.8	27.1	29.5	23.0	30.0	17.6	15.5	20.7	21.7	38.2	25.3	33.1	27.9	35.1	35.9	35.9	46.8	28.4	34.4	26.9	40.1	40.6	48.3	59.9	50.6
Index (MPI)	17.3	25.3	23.9	14.5	37.3	43.8	18.4	12.1	27.8	21.4	82.0	56.0	0.0	15.9	15.1	17.1	51.8	44.6	64.6	23.3	13.7	18.3	7.0	11.5	14.3	30.5	8.2	24.2	17.0	5.5	25.9

% Chg	January																														
	Tu	We	Th	Fr	Sa	Su	Mo	Tu	We	Th	Fr	Sa	Su	Mo	Tu	We	Th	Fr	Sa	Su	Mo	Tu	We	Th	Fr	Sa	Su	Mo	Tu	We	Th
My Property	0.0	300.0	0.0	200.0	150.0	0.0	0.0	100.0	400.0	50.0	200.0	-40.0	-100.0	0.0	100.0	0.0	0.0	350.0	450.0	0.0	200.0	300.0	100.0	100.0	0.0	150.0	100.0	50.0	66.7	-50.0	300.0
Competitive Set	-32.4	13.7	-2.2	58.1	5.8	-10.8	-11.5	19.3	-28.3	-24.6	-25.2	-47.7	-67.7	-57.9	-25.7	-42.9	15.3	14.3	111.8	2.3	-32.5	-12.0	-6.2	-9.8	20.9	-8.8	21.1	-6.0	61.2	35.7	96.0
Index (MPI)	48.0	251.9	0.0	89.7	136.4	0.0	0.0	67.6	597.4	98.9	300.9	14.7	-100.0	0.0	169.0	0.0	0.0	293.8	159.7	0.0	344.6	354.7	113.3	121.8	-17.3	174.0	65.2	59.6	3.4	-63.1	104.1

ADR	January																														
	1	2	3	4	5	6	7	8	9	10	11	12	13	14	15	16	17	18	19	20	21	22	23	24	25	26	27	28	29	30	31
My Property	52.72	70.27	73.21	90.38	80.14	87.74	84.09	92.50	64.81	73.75	77.38	96.31	0.00	85.00	83.21	87.90	82.14	81.93	79.97	67.29	84.39	88.29	95.46	76.50	72.42	61.84	77.25	70.92	75.43	74.38	70.31
Competitive Set	68.48	65.99	67.91	68.91	68.86	68.34	69.71	64.63	68.46	70.14	66.57	70.07	66.81	60.44	61.65	59.72	65.17	61.62	65.24	65.94	63.91	65.59	61.05	65.67	65.37	67.24	68.12	67.47	64.38	62.44	63.96
Index (ARI)	77.0	106.5	107.8	131.1	116.4	128.4	120.6	143.1	94.7	105.2	116.2	137.4	0.0	140.6	135.0	147.2	126.0	133.0	122.6	102.0	132.0	134.6	156.4	116.5	110.8	92.0	113.4	105.1	117.2	119.1	109.9

% Chg	January																														
	1	2	3	4	5	6	7	8	9	10	11	12	13	14	15	16	17	18	19	20	21	22	23	24	25	26	27	28	29	30	31
My Property	-34.2	19.1	0.0	22.3	52.7	0.0	0.0	6.8	17.8	2.4	23.7	7.9	-100.0	0.0	-8.5	0.0	0.0	18.0	15.2	0.0	-15.3	-38.5	7.0	53.0	56.3	-11.0	54.5	15.0	14.3	0.3	-5.0
Competitive Set	-4.9	-11.7	-11.1	-6.1	-9.0	-4.6	-8.7	-13.6	-0.2	-10.4	4.0	1.0	-0.5	-8.9	-7.6	-6.9	-14.6	-8.3	-4.1	-6.2	-6.1	-10.2	-10.5	-12.5	-13.4	-6.3	0.5	3.2	-13.9	-6.3	-13.8
Index (ARI)	-30.8	34.9	0.0	30.2	67.7	0.0	0.0	23.6	18.1	14.3	18.9	6.8	-100.0	0.0	-1.0	0.0	0.0	28.7	20.1	0.0	-9.8	-31.6	19.6	74.9	80.6	-5.0	53.7	11.4	32.8	7.1	10.2

RevPAR	January																														
	1	2	3	4	5	6	7	8	9	10	11	12	13	14	15	16	17	18	19	20	21	22	23	24	25	26	27	28	29	30	31
My Property	3.46	9.22	6.00	4.44	6.57	5.75	2.76	3.03	5.31	3.63	19.03	9.47	0.00	2.79	2.73	5.76	10.77	12.09	14.42	5.52	4.15	5.79	3.13	2.51	3.56	5.07	2.53	6.98	6.18	2.44	9.22
Competitive Set	26.01	34.27	23.34	23.33	15.12	10.24	12.43	17.54	20.17	16.13	19.95	12.31	10.36	12.49	13.38	22.84	16.50	20.38	18.21	23.17	22.95	23.56	28.55	18.67	22.47	18.07	27.28	27.37	31.11	37.43	32.39
Index (RGI)	13.3	26.9	25.7	19.1	43.4	56.2	22.2	17.3	26.3	22.5	95.4	76.9	0.0	22.3	20.4	25.2	65.3	59.3	79.2	23.8	18.1	24.6	11.0	13.4	15.9	28.1	9.3	25.5	19.9	6.5	28.5

% Chg	January																														
	1	2	3	4	5	6	7	8	9	10	11	12	13	14	15	16	17	18	19	20	21	22	23	24	25	26	27	28	29	30	31
My Property	-34.2	376.4	0.0	267.0	281.6	0.0	0.0	113.7	489.2	53.6	271.1	-35.3	-100.0	0.0	83.0	0.0	0.0	430.9	533.4	0.0	154.0	145.9	114.1	206.0	56.3	122.5	209.0	72.4	90.5	-49.8	280.1
Competitive Set	-35.7	0.4	-13.1	48.5	-3.7	-14.9	-19.3	3.1	-28.4	-32.4	-22.2	-47.2	-67.9	-61.6	-31.3	-46.8	-1.5	4.8	103.1	-4.1	-36.6	-21.0	-16.0	-21.1	4.7	-14.6	21.7	-3.0	38.7	27.1	69.0
Index (RGI)	2.4	374.5	0.0	147.1	296.5	0.0	0.0	107.2	723.3	127.3	376.8	22.5	-100.0	0.0	166.3	0.0	0.0	406.7	211.9	0.0	301.0	211.0	155.0	287.9	49.3	160.4	153.8	77.8	37.3	-60.5	124.9

The STR STAR Report is a publication of STR, Inc. and STR Global, Ltd., and is intended solely for use by paid subscribers. Reproduction or distribution of the STR STAR Report, in whole or part, without written permission is prohibited and subject to legal action. If you have received this report and are NOT a subscriber to the STR STAR Report, please contact us immediately. Source: 2019 STR, Inc. / STR Global, Ltd. trading as "STR".