

Tab 2 - Monthly Performance at a Glance - My Property vs. Competitive Set

Best Western East Zion Thunderbird Lodge Jct State Rte 9 & Hwy 89 Mount Carmel, UT 84755 Phone: (435) 648-2203

STR # 3686 ChainID: 45027 MgtCo: None Owner: None

For the Month of: December 2017 Date Created: January 18, 2018 Monthly Competitive Set Data Excludes Subject Property

December 2017

	Occupancy (%)			ADR			RevPAR		
	My Prop	Comp Set	Index (MPI)	My Prop	Comp Set	Index (ARI)	My Prop	Comp Set	Index (RGI)
Current Month	13.3	47.0	28.4	79.31	72.52	109.4	10.57	34.07	31.0
Year To Date	51.5	74.1	69.5	135.39	115.46	117.3	69.73	85.61	81.4
Running 3 Month	36.0	67.6	53.3	119.88	100.73	119.0	43.17	68.05	63.4
Running 12 Month	51.5	74.1	69.5	135.39	115.46	117.3	69.73	85.61	81.4

December 2017 vs. 2016 Percent Change (%)

	Occupancy			ADR			RevPAR		
	My Prop	Comp Set	Index (MPI)	My Prop	Comp Set	Index (ARI)	My Prop	Comp Set	Index (RGI)
Current Month	-45.2	18.2	-53.7	36.3	4.2	30.8	-25.3	23.2	-39.4
Year To Date	-10.3	2.4	-12.4	3.8	1.0	2.8	-6.9	3.4	-10.0
Running 3 Month	-28.0	6.4	-32.3	13.1	5.4	7.3	-18.5	12.1	-27.3
Running 12 Month	-10.3	2.4	-12.4	3.8	1.0	2.8	-6.9	3.4	-10.0

The STR STAR Report is a publication of STR, Inc. and STR Global, Ltd., and is intended solely for use by paid subscribers. Reproduction or distribution of the STR STAR Report, in whole or part, without written permission is prohibited and subject to legal action. If you have received this report and are NOT a subscriber to the STR STAR Report, please contact us immediately. Source: 2018 STR, Inc. / STR Global, Ltd. trading as "STR".

Tab 3 - STAR Summary - My Property vs. Comp Set and Industry Segments

Best Western East Zion Thunderbird Lodge Jct State Rte 9 & Hwy 89 Mount Carmel, UT 84755 Phone: (435) 648-2203

STR # 3686 ChainID: 45027 MgtCo: None Owner: None

For the Month of: December 2017 Date Created: January 18, 2018 Monthly Competitive Set Data Excludes Subject Property

Occupancy (%)								
Current Month	% Chg	Year to Date	% Chg	Running 3 Month	% Chg	Running 12 Month	% Chg	
Best Western East Zion Thunderbird Lodge	13.3	-45.2	51.5	-10.3	36.0	-28.0	51.5	-10.3
Market: Utah Area	40.0	3.6	60.6	2.0	51.0	1.9	60.6	2.0
Market Class: Midscale Class	38.8	2.7	60.7	1.4	50.9	1.8	60.7	1.4
Submarket: Utah Area	37.4	5.3	57.9	2.9	47.6	3.8	57.9	2.9
Submarket Scale: Midscale Chains	40.9	8.0	65.4	2.5	55.9	4.0	65.4	2.5
Competitive Set: Competitors	47.0	18.2	74.1	2.4	67.6	6.4	74.1	2.4

Supply			
Month % Chg	YTD % Chg	Run 3 Mon % Chg	Run 12 Mon % Chg
0.0	-0.3	0.0	-0.3
3.4	1.6	2.8	1.6
5.6	3.2	4.9	3.2
2.0	1.3	1.8	1.3
7.1	0.8	3.6	0.8
0.0	9.5	0.0	9.5

Best Western East Zion Thunderbird Lodge
Market: Utah Area
Market Class: Midscale Class
Submarket: Utah Area
Submarket Scale: Midscale Chains
Competitive Set: Competitors

Average Daily Rate								
Current Month	% Chg	Year to Date	% Chg	Running 3 Month	% Chg	Running 12 Month	% Chg	
Best Western East Zion Thunderbird Lodge	79.31	36.3	135.39	3.8	119.88	13.1	135.39	3.8
Market: Utah Area	152.44	-6.1	133.49	3.5	123.46	-0.1	133.49	3.5
Market Class: Midscale Class	100.94	-3.3	110.91	3.3	101.46	0.5	110.91	3.3
Submarket: Utah Area	196.69	-6.9	153.85	3.8	141.68	0.2	153.85	3.8
Submarket Scale: Midscale Chains	86.81	1.8	119.44	1.7	105.22	1.6	119.44	1.7
Competitive Set: Competitors	72.52	4.2	115.46	1.0	100.73	5.4	115.46	1.0

Demand			
Month % Chg	YTD % Chg	Run 3 Mon % Chg	Run 12 Mon % Chg
-45.2	-10.6	-28.0	-10.6
7.1	3.5	4.8	3.5
8.4	4.7	6.8	4.7
7.4	4.3	5.6	4.3
15.7	3.4	7.8	3.4
18.2	12.1	6.4	12.1

Best Western East Zion Thunderbird Lodge
Market: Utah Area
Market Class: Midscale Class
Submarket: Utah Area
Submarket Scale: Midscale Chains
Competitive Set: Competitors

RevPAR								
Current Month	% Chg	Year to Date	% Chg	Running 3 Month	% Chg	Running 12 Month	% Chg	
Best Western East Zion Thunderbird Lodge	10.57	-25.3	69.73	-6.9	43.17	-18.5	69.73	-6.9
Market: Utah Area	61.03	-2.7	80.94	5.5	62.99	1.8	80.94	5.5
Market Class: Midscale Class	39.16	-0.7	67.29	4.8	51.69	2.3	67.29	4.8
Submarket: Utah Area	73.60	-2.0	89.02	6.8	67.46	4.0	89.02	6.8
Submarket Scale: Midscale Chains	35.51	9.9	78.07	4.3	58.80	5.6	78.07	4.3
Competitive Set: Competitors	34.07	23.2	85.61	3.4	68.05	12.1	85.61	3.4

Revenue			
Month % Chg	YTD % Chg	Run 3 Mon % Chg	Run 12 Mon % Chg
-25.3	-7.2	-18.5	-7.2
0.5	7.2	4.7	7.2
4.8	8.1	7.3	8.1
0.0	8.2	5.9	8.2
17.7	5.1	9.4	5.1
23.2	13.2	12.1	13.2

Best Western East Zion Thunderbird Lodge
Market: Utah Area
Market Class: Midscale Class
Submarket: Utah Area
Submarket Scale: Midscale Chains
Competitive Set: Competitors

Census/Sample - Properties & Rooms					
Census		Sample		Sample %	
Properties	Rooms	Properties	Rooms	Rooms	
Market: Utah Area	418	28693	237	19703	68.7
Market Class: Midscale Class	71	5024	51	3838	76.4
Submarket: Utah Area	299	19269	143	11530	59.8
Submarket Scale: Midscale Chains	70	5754	69	5446	94.6
Competitive Set: Competitors	5	387	5	387	100.0

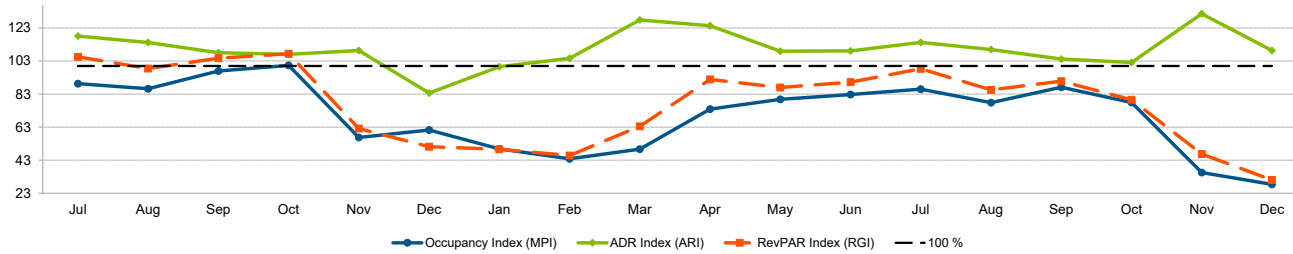
Pipeline			
Market: Utah Area			
Under Construction		Planning	
Properties	Rooms	Properties	Rooms
14	1399	20	1761
See Help page for pipeline definitions.			

Market: Utah Area
Market Class: Midscale Class
Submarket: Utah Area
Submarket Scale: Midscale Chains
Competitive Set: Competitors

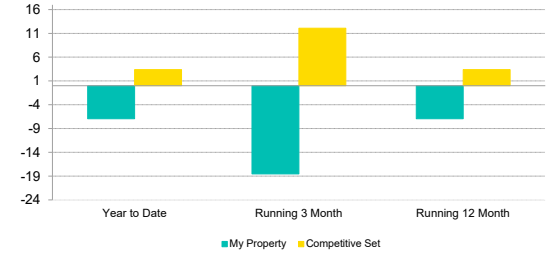
Tab 4 - Competitive Set Report

Best Western East Zion Thunderbird Lodge Jct Slate Rte 9 & Hwy 89 Mount Carmel, UT 84755 Phone: (435) 648-2203
 STR # 3686 ChainID: 45027 MgtCo: None Owner: None
 For the Month of: December 2017 Date Created: January 18, 2018 Monthly Competitive Set Data Excludes Subject Property

Monthly Indexes



RevPAR Percent Change



Occupancy (%)	2016						2017												Year To Date			Running 3 Month			Running 12 Month		
	Jul	Aug	Sep	Oct	Nov	Dec	Jan	Feb	Mar	Apr	May	Jun	Jul	Aug	Sep	Oct	Nov	Dec	2015	2016	2017	2015	2016	2017	2015	2016	2017
My Property	80.4	71.9	91.7	91.1	34.0	24.3	14.3	21.8	33.4	65.6	74.0	76.2	74.4	66.8	82.3	71.7	22.6	13.3	64.1	57.4	51.5	46.3	50.0	36.0	64.1	57.4	51.5
Competitive Set	90.0	83.4	94.7	90.7	59.9	39.7	28.6	49.7	67.3	88.8	92.8	92.1	86.5	85.9	94.5	92.0	63.5	47.0	73.4	72.4	74.1	57.2	63.5	67.6	73.4	72.4	74.1
Index (MPI)	89.3	86.2	96.9	100.4	56.8	61.2	49.9	43.8	49.7	73.9	79.8	82.7	86.0	77.8	87.1	77.9	35.5	28.4	87.4	79.3	69.5	80.9	78.7	53.3	87.4	79.3	69.5
Rank	6 of 6	5 of 6	5 of 6	3 of 6	6 of 6	6 of 6	6 of 6	6 of 6	6 of 6	6 of 6	6 of 6	6 of 6	5 of 6	6 of 6	6 of 6	6 of 6	6 of 6	6 of 6	4 of 5	6 of 6	6 of 6	4 of 5	6 of 6	6 of 6	4 of 5	6 of 6	6 of 6
% Chg																											
My Property	-16.3	-16.3	-2.3	11.0	-8.9	26.4	25.0	20.0	-24.4	-0.7	-0.3	-5.4	-7.5	-7.1	-10.2	-21.3	-33.7	-45.2	9.6	-10.4	-10.3	11.5	7.9	-28.0	9.6	-10.4	-10.3
Competitive Set	-3.4	-10.0	-1.8	-4.8	20.3	8.9	-1.3	1.0	-9.8	18.6	2.5	12.3	-3.9	3.0	-0.2	1.4	6.0	18.2	0.5	-1.3	2.4	-7.4	11.0	6.4	0.5	-1.3	2.4
Index (MPI)	-13.4	-7.0	-0.6	16.7	-24.3	16.0	26.7	18.9	-16.2	-16.3	-2.7	-15.7	-3.7	-9.8	-10.1	-22.4	-37.4	-53.7	9.1	-9.2	-12.4	20.5	-2.8	-32.3	9.1	-9.2	-12.4
Rank	4 of 4	4 of 4	4 of 4	1 of 4	5 of 5	2 of 5	2 of 5	1 of 5	5 of 5	5 of 5	4 of 5	6 of 6	4 of 6	6 of 6	6 of 6	6 of 6	6 of 6	6 of 6	1 of 4	5 of 5	6 of 6	2 of 4	2 of 5	6 of 6	1 of 4	5 of 5	6 of 6
ADR																											
	2016						2017												Year To Date			Running 3 Month			Running 12 Month		
	Jul	Aug	Sep	Oct	Nov	Dec	Jan	Feb	Mar	Apr	May	Jun	Jul	Aug	Sep	Oct	Nov	Dec	2015	2016	2017	2015	2016	2017	2015	2016	2017
My Property	153.92	149.17	151.93	126.07	85.98	58.20	66.04	72.03	106.99	131.07	146.09	148.87	152.85	148.17	150.17	132.19	104.25	79.31	116.59	130.43	135.39	101.02	106.04	119.88	116.59	130.43	135.39
Competitive Set	130.29	130.67	140.68	117.83	78.59	69.58	66.36	68.82	83.68	105.42	134.08	136.44	133.76	134.73	144.13	129.48	79.24	72.52	107.72	114.33	115.46	90.20	95.58	100.73	107.72	114.33	115.46
Index (ARI)	118.1	114.2	108.0	107.0	109.4	83.6	99.5	104.7	127.9	124.3	109.0	109.1	114.3	110.0	104.2	102.1	131.6	109.4	108.2	114.1	117.3	112.0	110.9	119.0	108.2	114.1	117.3
Rank	1 of 6	2 of 6	3 of 6	3 of 6	2 of 6	6 of 6	4 of 6	3 of 6	1 of 6	1 of 6	3 of 6	3 of 6	2 of 6	2 of 6	4 of 6	4 of 6	1 of 6	2 of 6	2 of 5	1 of 6	1 of 6	2 of 5	2 of 6	1 of 6	2 of 5	1 of 6	1 of 6
% Chg																											
My Property	12.0	9.1	7.9	4.4	15.4	-12.8	4.4	4.0	11.8	11.5	5.5	-5.0	-0.7	-0.7	-1.2	4.8	21.2	36.3	20.2	11.9	3.8	7.7	5.0	13.1	20.2	11.9	3.8
Competitive Set	0.3	1.3	7.9	7.7	1.0	-0.2	-1.4	0.2	-6.6	0.9	1.9	-0.4	2.7	3.1	2.5	9.9	0.8	4.2	8.6	6.1	1.0	2.4	6.0	5.4	8.6	6.1	1.0
Index (ARI)	11.6	7.7	0.0	-3.0	14.2	-12.6	5.9	3.7	19.7	10.5	3.5	-4.6	-3.3	-3.7	-3.5	-4.6	20.3	30.8	10.6	5.4	2.8	5.2	-0.9	7.3	10.6	5.4	2.8
Rank	1 of 4	1 of 4	1 of 4	3 of 4	1 of 5	5 of 5	1 of 5	2 of 5	1 of 5	1 of 5	2 of 5	5 of 6	4 of 6	4 of 6	5 of 6	5 of 6	1 of 6	1 of 6	1 of 4	2 of 5	2 of 6	1 of 4	2 of 5	1 of 6	1 of 4	2 of 5	2 of 6
RevPAR																											
	2016						2017												Year To Date			Running 3 Month			Running 12 Month		
	Jul	Aug	Sep	Oct	Nov	Dec	Jan	Feb	Mar	Apr	May	Jun	Jul	Aug	Sep	Oct	Nov	Dec	2015	2016	2017	2015	2016	2017	2015	2016	2017
My Property	123.72	107.28	139.39	114.81	29.27	14.16	9.43	15.69	35.76	86.02	108.15	113.40	113.65	99.04	123.67	94.79	23.53	10.57	74.76	74.92	69.73	46.78	53.00	43.17	74.76	74.92	69.73
Competitive Set	117.22	109.01	133.17	106.92	47.12	27.65	19.00	34.20	56.31	93.60	124.37	125.68	115.65	115.76	136.21	119.18	50.34	34.07	79.07	82.80	85.61	51.62	60.71	68.05	79.07	82.80	85.61
Index (RGI)	105.5	98.4	104.7	107.4	62.1	51.2	49.6	45.9	63.5	91.9	87.0	90.2	98.3	85.6	90.8	79.5	46.7	31.0	94.5	90.5	81.4	90.6	87.3	63.4	94.5	90.5	81.4
Rank	2 of 6	3 of 6	4 of 6	2 of 6	6 of 6	6 of 6	6 of 6	6 of 6	6 of 6	4 of 6	5 of 6	5 of 6	4 of 6	5 of 6	5 of 6	5 of 6	6 of 6	6 of 6	3 of 5	5 of 6	5 of 6	4 of 5	5 of 6	6 of 6	3 of 5	5 of 6	5 of 6
% Chg																											
My Property	-6.3	-8.7	5.4	15.9	5.1	10.2	30.6	24.8	-15.5	10.7	5.2	-10.1	-8.1	-7.7	-11.3	-17.4	-19.6	-25.3	31.8	0.2	-6.9	20.1	13.3	-18.5	31.8	0.2	-6.9
Competitive Set	-3.1	-8.8	6.0	2.5	21.5	8.7	-2.7	1.2	-15.8	19.6	4.4	11.8	-1.3	6.2	2.3	11.5	6.8	23.2	9.2	4.7	3.4	-5.2	17.6	12.1	9.2	4.7	3.4
Index (RGI)	-3.3	0.1	-0.6	13.1	-13.5	1.4	34.2	23.3	0.4	-7.5	0.7	-19.6	-6.9	-13.1	-13.3	-25.9	-24.8	-39.4	20.7	-4.3	-10.0	26.7	-3.7	-27.3	20.7	-4.3	-10.0
Rank	3 of 4	4 of 4	2 of 4	1 of 4	4 of 5	3 of 5	2 of 5	1 of 5	2 of 5	4 of 5	2 of 5	6 of 6	5 of 6	5 of 6	6 of 6	6 of 6	6 of 6	6 of 6	1 of 4	5 of 5	5 of 6	2 of 4	2 of 5	6 of 6	1 of 4	5 of 5	5 of 6

The STR STAR Report is a publication of STR, Inc. and STR Global, Ltd., and is intended solely for use by paid subscribers. Reproduction or distribution of the STR STAR Report, in whole or part, without written permission is prohibited and subject to legal action. If you have received this report and are NOT a subscriber to the STR STAR Report, please contact us immediately. Source: 2018 STR, Inc. / STR Global, Ltd. trading as "STR".

Tab 5 - Response Report

Best Western East Zion Thunderbird Lodge Jct State Rte 9 & Hwy 89 Mount Carmel, UT 84755 Phone: (435) 648-2203
 STR # 3686 ChainID: 45027 MgtCo: None Owner: None
 For the Month of: December 2017 Date Created: January 18, 2018

This Year

- Dec 13th - First Day of Hanukkah
- Dec 24th - Christmas Eve
- Dec 25th - Christmas
- Dec 26th - First Day of Kwanzaa
- Dec 31st - New Year's Eve

December 2017 (This Year)

Sun	Mon	Tue	Wed	Thu	Fri	Sat
					1	2
3	4	5	6	7	8	9
10	11	12	13	14	15	16
17	18	19	20	21	22	23
24	25	26	27	28	29	30
31						

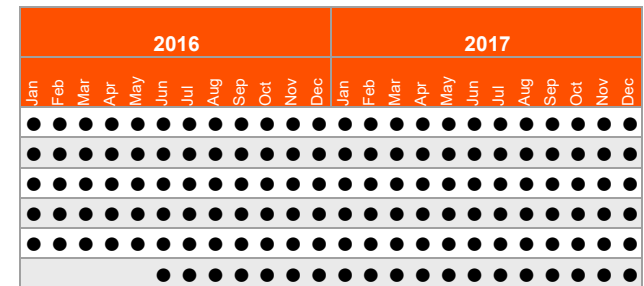
December 2016 (Last Year)

Sun	Mon	Tue	Wed	Thu	Fri	Sat
				1	2	3
4	5	6	7	8	9	10
11	12	13	14	15	16	17
18	19	20	21	22	23	24
25	26	27	28	29	30	31

Last Year

- Dec 24th - Christmas Eve
- Dec 25th - Christmas
- Dec 25th - First Day of Hanukkah
- Dec 26th - First Day of Kwanzaa
- Dec 31st - New Year's Eve

STR#	Name	City, State	Zip	Phone	Rooms	Open Date
3686	Best Western East Zion Thunderbird Lodge	Mount Carmel, UT	84755	(435) 648-2203	61	196906
3681	Best Western Red Hills	Kanab, UT	84741-3417	(435) 644-2675	74	195806
30148	Quality Inn Kanab	Kanab, UT	84741-3829	(435) 644-8888	71	199406
57309	Holiday Inn Express & Suites Kanab	Kanab, UT	84741-3651	(435) 644-3100	79	200804
64568	Comfort Suites Kanab	Kanab, UT	84741-3416	(435) 644-8200	82	201511
64776	Hampton Inn Kanab	Kanab, UT	84741-3540	(435) 644-8282	81	201606
					448	



Data received:

- = Monthly Only
- = Monthly & Daily

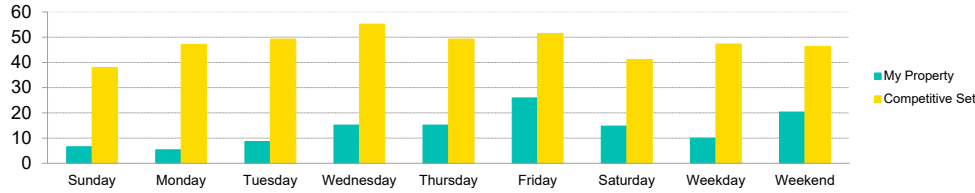
Tab 6 - Day of Week and Weekday/Weekend Report

Best Western East Zion Thunderbird Lodge Jct State Rte 9 & Hwy 89 Mount Carmel, UT 84755 Phone: (435) 648-2203

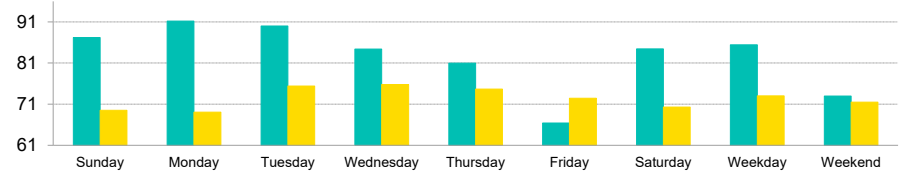
STR # 3686 ChainID: 45027 MgtCo: None Owner: None

For the Month of: December 2017 Date Created: January 18, 2018 Monthly Competitive Set Data Excludes Subject Property

Current Month Occupancy



Current Month ADR



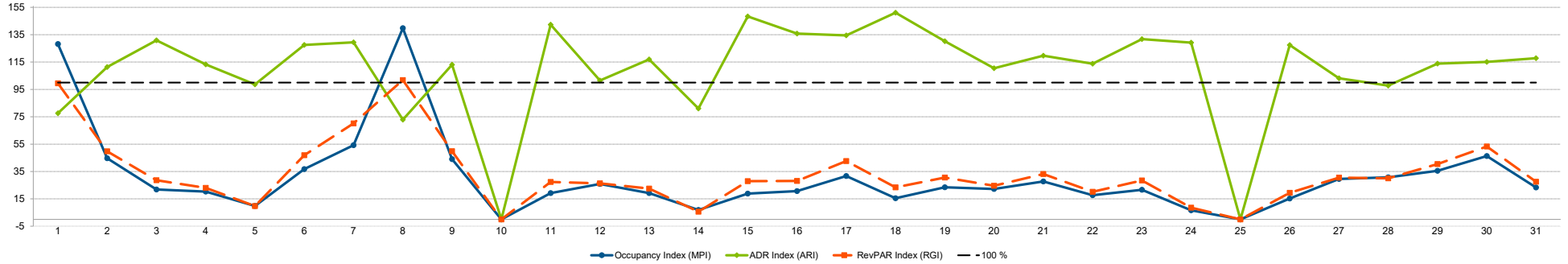
Day of Week	Time Period	Occupancy (%)						Average Daily Rate						RevPAR					
		My Property		Competitive Set		Index (MPI)		My Property		Competitive Set		Index (ARI)		My Property		Competitive Set		Index (RGI)	
			% Chg		% Chg		% Chg		% Chg		% Chg		% Chg		% Chg		% Chg		% Chg
Sunday	Current Month	6.6	-44.8	37.9	21.9	17.3	-54.7	87.19	124.4	69.50	-1.1	125.4	127.0	5.72	23.8	26.37	20.5	21.7	2.8
	Year To Date	46.1	-10.1	69.0	-1.4	66.9	-8.9	139.62	6.1	113.27	0.9	123.3	5.1	64.39	-4.7	78.14	-0.5	82.4	-4.2
	Running 3 Month	30.6	-29.8	61.5	5.3	49.7	-33.3	124.65	11.5	99.38	2.1	125.4	9.2	38.10	-21.7	61.16	7.5	62.3	-27.2
	Running 12 Month	46.1	-10.1	69.0	-1.4	66.9	-8.9	139.62	6.1	113.27	0.9	123.3	5.1	64.39	-4.7	78.14	-0.5	82.4	-4.2
Monday	Current Month	5.3	-75.0	47.2	2.1	11.3	-75.5	91.20	65.9	69.05	-1.6	132.1	68.6	4.86	-58.5	32.58	0.5	14.9	-58.7
	Year To Date	48.6	-12.7	69.6	0.9	69.9	-13.5	132.63	2.3	114.60	0.8	115.7	1.5	64.52	-10.7	79.78	1.7	80.9	-12.2
	Running 3 Month	31.8	-30.2	64.7	5.1	49.1	-33.6	126.70	19.1	101.70	8.1	124.6	10.2	40.26	-16.8	65.79	13.6	61.2	-26.8
	Running 12 Month	48.6	-12.7	69.6	0.9	69.9	-13.5	132.63	2.3	114.60	0.8	115.7	1.5	64.52	-10.7	79.78	1.7	80.9	-12.2
Tuesday	Current Month	8.6	-70.0	49.2	2.0	17.5	-70.6	90.01	51.5	75.39	7.1	119.4	41.6	7.75	-54.5	37.13	9.2	20.9	-58.4
	Year To Date	53.0	-7.4	76.4	3.4	69.3	-10.5	131.69	1.3	115.51	2.0	114.0	-0.7	69.79	-6.3	88.29	5.5	79.0	-11.2
	Running 3 Month	33.7	-30.8	68.4	3.3	49.2	-33.0	122.81	21.2	102.93	10.1	119.3	10.1	41.35	-16.1	70.38	13.6	58.7	-26.2
	Running 12 Month	53.0	-7.4	76.4	3.4	69.3	-10.5	131.69	1.3	115.51	2.0	114.0	-0.7	69.79	-6.3	88.29	5.5	79.0	-11.2
Wednesday	Current Month	15.2	-44.8	55.2	14.3	27.5	-51.7	84.38	33.7	75.78	7.9	111.4	23.9	12.80	-26.2	41.81	23.3	30.6	-40.1
	Year To Date	51.3	-11.6	75.6	5.9	67.9	-16.5	132.79	2.6	113.50	0.9	117.0	1.7	68.16	-9.3	85.78	6.8	79.5	-15.1
	Running 3 Month	37.1	-23.4	72.7	10.7	51.0	-30.8	120.46	17.7	98.68	7.4	122.1	9.6	44.66	-9.9	71.71	18.9	62.3	-24.2
	Running 12 Month	51.3	-11.6	75.6	5.9	67.9	-16.5	132.79	2.6	113.50	0.9	117.0	1.7	68.16	-9.3	85.78	6.8	79.5	-15.1
Thursday	Current Month	15.2	-39.9	49.2	26.0	30.8	-52.3	80.97	29.3	74.69	5.6	108.4	22.5	12.28	-22.3	36.77	33.0	33.4	-41.6
	Year To Date	52.3	-7.8	72.8	5.3	71.8	-12.5	136.15	4.6	114.10	0.6	119.3	4.0	71.16	-3.6	83.11	6.0	85.6	-9.0
	Running 3 Month	39.5	-22.7	66.7	7.1	59.2	-27.8	117.68	9.0	101.29	6.7	116.2	2.2	46.45	-15.8	67.53	14.2	68.8	-26.3
	Running 12 Month	52.3	-7.8	72.8	5.3	71.8	-12.5	136.15	4.6	114.10	0.6	119.3	4.0	71.16	-3.6	83.11	6.0	85.6	-9.0
Friday	Current Month	25.9	-19.4	51.5	39.1	50.3	-42.0	66.44	13.5	72.43	6.9	91.7	6.2	17.21	-8.5	37.27	48.7	46.2	-38.5
	Year To Date	53.7	-13.0	77.6	1.8	69.2	-14.6	132.04	2.5	116.67	0.1	113.2	2.5	70.93	-10.8	90.59	1.9	78.3	-12.5
	Running 3 Month	43.9	-23.3	71.2	7.7	61.6	-28.8	109.41	7.3	99.88	4.9	109.5	2.3	48.01	-17.7	71.15	13.0	67.5	-27.2
	Running 12 Month	53.7	-13.0	77.6	1.8	69.2	-14.6	132.04	2.5	116.67	0.1	113.2	2.5	70.93	-10.8	90.59	1.9	78.3	-12.5
Saturday	Current Month	14.8	-32.8	41.2	31.8	35.8	-49.0	84.45	47.2	70.31	4.6	120.1	40.7	12.46	-1.1	28.97	37.9	43.0	-28.3
	Year To Date	55.5	-9.0	78.0	1.1	71.2	-10.0	142.67	7.0	120.14	1.8	118.8	5.1	79.25	-2.7	93.72	2.9	84.6	-5.4
	Running 3 Month	36.1	-34.5	68.2	6.1	52.9	-38.2	121.36	9.6	101.43	-0.3	119.7	10.0	43.77	-28.2	69.19	5.7	63.3	-32.1
	Running 12 Month	55.5	-9.0	78.0	1.1	71.2	-10.0	142.67	7.0	120.14	1.8	118.8	5.1	79.25	-2.7	93.72	2.9	84.6	-5.4
Weekday/Weekend																			
Weekday (Sun-Thu)	Current Month	10.0	-56.6	47.3	11.5	21.1	-61.1	85.45	46.6	73.01	3.7	117.0	41.4	8.54	-36.4	34.52	15.6	24.7	-45.0
	Year To Date	50.3	-10.0	72.7	2.8	69.1	-12.5	134.50	3.3	114.21	1.1	117.8	2.3	67.59	-7.0	83.00	3.9	81.4	-10.5
	Running 3 Month	34.5	-27.4	66.7	6.2	51.6	-31.6	122.21	15.5	100.77	6.9	121.3	8.0	42.10	-16.2	67.22	13.5	62.6	-26.1
	Running 12 Month	50.3	-10.0	72.7	2.8	69.1	-12.5	134.50	3.3	114.21	1.1	117.8	2.3	67.59	-7.0	83.00	3.9	81.4	-10.5
Weekend (Fri-Sat)	Current Month	20.3	-24.8	46.3	35.7	43.9	-44.6	72.98	25.7	71.48	5.9	102.1	18.7	14.83	-5.5	33.12	43.8	44.8	-34.3
	Year To Date	54.6	-11.0	77.8	1.5	70.2	-12.3	137.44	4.9	118.41	0.9	116.1	3.9	75.09	-6.7	92.15	2.4	81.5	-8.9
	Running 3 Month	40.0	-28.7	69.7	7.0	57.3	-33.4	114.80	7.9	100.64	2.1	114.1	5.7	45.89	-23.1	70.17	9.2	65.4	-29.6
	Running 12 Month	54.6	-11.0	77.8	1.5	70.2	-12.3	137.44	4.9	118.41	0.9	116.1	3.9	75.09	-6.7	92.15	2.4	81.5	-8.9
Total	Current Month	13.3	-45.2	47.0	18.2	28.4	-53.7	79.31	36.3	72.52	4.2	109.4	30.8	10.57	-25.3	34.07	23.2	31.0	-39.4
	Year To Date	51.5	-10.3	74.1	2.4	69.5	-12.4	135.39	3.8	115.46	1.0	117.3	2.8	69.73	-6.9	85.61	3.4	81.4	-10.0
	Running 3 Month	36.0	-28.0	67.6	6.4	53.3	-32.3	119.88	13.1	100.73	5.4	119.0	7.3	43.17	-18.5	68.05	12.1	63.4	-27.3
	Running 12 Month	51.5	-10.3	74.1	2.4	69.5	-12.4	135.39	3.8	115.46	1.0	117.3	2.8	69.73	-6.9	85.61	3.4	81.4	-10.0

The STR STAR Report is a publication of STR, Inc. and STR Global, Ltd., and is intended solely for use by paid subscribers. Reproduction or distribution of the STR STAR Report, in whole or part, without written permission is prohibited and subject to legal action. If you have received this report and are NOT a subscriber to the STR STAR Report, please contact us immediately. Source: 2018 STR, Inc. / STR Global, Ltd. trading as "STR".

Tab 7 - Daily Data for the Month

Best Western East Zion Thunderbird Lodge Jct State Rte 9 & Hwy 89 Mount Carmel, UT 84755 Phone: (435) 648-2203
 STR # 3686 ChainID: 45027 MgtCo: None Owner: None
 For the Month of: December 2017 Date Created: January 18, 2018 Daily Competitive Set Data Excludes Subject Property

Daily Indexes for the Month of December



Occupancy (%)	December																														
	Fr	Sa	Su	Mo	Tu	We	Th	Fr	Sa	Su	Mo	Tu	We	Th	Fr	Sa	Su	Mo	Tu	We	Th	Fr	Sa	Su	Mo	Tu	We	Th	Fr	Sa	Su
My Property	32.8	8.2	6.6	8.2	3.3	13.1	16.4	42.6	8.2	0.0	6.6	6.6	6.6	1.6	4.9	4.9	8.2	6.6	9.8	11.5	13.1	13.1	13.1	3.3	0.0	14.8	29.5	29.5	36.1	39.3	14.8
Competitive Set	25.6	18.3	30.0	40.3	33.3	35.7	30.2	30.5	18.6	21.7	34.1	25.3	34.1	23.8	26.1	23.8	25.8	42.4	41.9	51.7	47.3	74.2	60.7	49.4	72.4	96.9	99.7	96.1	101.6	85.0	63.3
Index (MPI)	128.2	44.7	21.9	20.3	9.8	36.8	54.2	139.8	44.1	0.0	19.2	25.9	19.2	6.9	18.8	20.7	31.7	15.5	23.5	22.2	27.7	17.7	21.6	6.6	0.0	15.2	29.6	30.7	35.5	46.3	23.3

% Chg	December																														
	Fr	Sa	Su	Mo	Tu	We	Th	Fr	Sa	Su	Mo	Tu	We	Th	Fr	Sa	Su	Mo	Tu	We	Th	Fr	Sa	Su	Mo	Tu	We	Th	Fr	Sa	Su
My Property	-42.9	-58.3	-42.9	-28.6	-80.0	-38.5	-16.7	420.0	-28.6	-100.0	-55.6	-50.0	-60.0	-90.0	-62.5	-50.0	-37.5	-63.6	-68.4	-50.0	-42.9	-46.7	-27.3	-60.0	-100.0	-72.7	-40.0	-35.7	-37.1	-22.6	-55.0
Competitive Set	-11.6	-22.8	24.7	50.0	26.5	7.8	53.9	32.6	-25.0	13.5	71.4	5.4	43.5	7.0	-1.0	-15.6	-1.0	-9.4	-8.0	32.5	5.8	79.4	31.3	-10.7	-20.7	-0.3	2.7	13.7	55.3	155.0	116.6
Index (MPI)	-35.4	-46.0	-54.2	-52.4	-84.2	-42.9	-45.9	292.2	-4.8	-100.0	-74.1	-52.6	-72.1	-90.7	-62.1	-40.8	-36.9	-59.9	-65.7	-62.3	-46.0	-70.3	-44.6	-55.2	-100.0	-72.7	-41.6	-43.5	-59.5	-69.6	-79.2

ADR	December																														
	1	2	3	4	5	6	7	8	9	10	11	12	13	14	15	16	17	18	19	20	21	22	23	24	25	26	27	28	29	30	31
My Property	56.46	80.74	88.86	77.42	70.00	90.18	86.68	48.35	80.39	0.00	97.18	77.20	83.06	60.00	103.92	91.73	90.62	102.43	86.03	75.24	84.16	79.76	87.38	87.60	0.00	102.80	85.65	77.55	86.94	84.18	84.45
Competitive Set	72.75	72.51	67.91	68.35	70.97	70.72	66.96	66.36	71.13	71.27	68.28	76.03	71.04	74.05	70.04	67.55	67.40	67.79	66.07	68.10	70.33	70.09	66.32	67.78	70.39	80.66	83.06	79.31	76.35	73.14	71.69
Index (ARI)	77.6	111.4	130.9	113.3	98.6	127.5	129.5	72.9	113.0	0.0	142.3	101.5	116.9	81.0	148.4	135.8	134.5	151.1	130.2	110.5	119.7	113.8	131.8	129.2	0.0	127.5	103.1	97.8	113.9	115.1	117.8

% Chg	December																														
	1	2	3	4	5	6	7	8	9	10	11	12	13	14	15	16	17	18	19	20	21	22	23	24	25	26	27	28	29	30	31
My Property	8.3	42.8	188.0	75.4	25.8	49.7	61.7	111.4	114.6	-100.0	133.7	61.7	44.9	15.7	172.3	178.1	110.7	103.4	38.5	32.1	56.2	8.4	53.9	181.7	-100.0	66.4	23.8	3.1	27.5	25.4	26.5
Competitive Set	6.7	10.8	0.0	4.2	13.6	6.7	-8.6	-4.1	7.0	5.8	-2.2	7.2	16.2	20.3	6.5	-2.2	-5.8	2.1	0.9	2.9	2.2	3.6	-0.4	-5.6	-4.3	7.9	10.1	8.1	12.5	7.3	0.6
Index (ARI)	1.5	28.8	187.9	68.4	10.8	40.3	76.9	120.5	100.5	-100.0	138.9	50.9	24.7	-3.8	155.8	184.4	123.7	99.3	37.2	28.3	52.8	4.6	54.6	198.3	-100.0	54.2	12.5	-4.7	13.3	16.9	25.8

RevPAR	December																														
	1	2	3	4	5	6	7	8	9	10	11	12	13	14	15	16	17	18	19	20	21	22	23	24	25	26	27	28	29	30	31
My Property	18.51	6.62	5.83	6.35	2.30	11.83	14.21	20.61	6.59	0.00	6.37	5.06	5.45	0.98	5.11	4.51	7.43	6.72	8.46	8.63	11.04	10.46	11.46	2.87	0.00	15.17	25.27	22.88	31.36	33.12	12.46
Competitive Set	18.61	13.30	20.35	27.55	23.66	25.22	20.24	20.23	13.23	15.47	23.29	19.25	24.23	17.60	18.28	16.06	17.42	28.73	27.66	35.19	33.26	51.98	40.27	33.45	50.93	78.15	82.84	76.20	77.53	62.18	45.35
Index (RGI)	99.5	49.7	28.6	23.0	9.7	46.9	70.2	101.8	49.8	0.0	27.4	26.3	22.5	5.6	28.0	28.1	42.7	23.4	30.6	24.5	33.2	20.1	28.5	8.6	0.0	19.4	30.5	30.0	40.4	53.3	27.5

% Chg	December																														
	1	2	3	4	5	6	7	8	9	10	11	12	13	14	15	16	17	18	19	20	21	22	23	24	25	26	27	28	29	30	31
My Property	-38.1	-40.5	64.6	25.3	-74.8	-7.9	34.8	999.4	53.3	-100.0	3.9	-19.1	-42.0	-88.4	2.1	39.0	31.7	-26.0	-56.3	-34.0	-10.8	-42.2	11.9	12.7	-100.0	-54.6	-25.7	-33.7	-19.9	-2.9	-43.1
Competitive Set	-5.7	-14.5	24.8	56.3	43.6	15.0	40.7	27.1	-19.7	20.1	67.7	12.9	66.8	28.7	5.4	-17.5	-6.7	-7.5	-7.1	36.3	8.1	85.8	30.7	-15.7	-24.1	7.6	13.0	23.0	74.8	173.6	117.9
Index (RGI)	-34.4	-30.4	31.9	-19.8	-82.5	-19.9	-4.2	764.9	91.0	-100.0	-38.1	-28.4	-65.2	-91.0	-3.1	68.5	41.2	-20.0	-52.9	-51.6	-17.5	-68.9	-14.4	33.7	-100.0	-57.8	-34.2	-46.1	-54.2	-64.5	-73.9

The STR STAR Report is a publication of STR, Inc. and STR Global, Ltd., and is intended solely for use by paid subscribers. Reproduction or distribution of the STR STAR Report, in whole or part, without written permission is prohibited and subject to legal action. If you have received this report and are NOT a subscriber to the STR STAR Report, please contact us immediately. Source: 2018 STR, Inc. / STR Global, Ltd. trading as "STR".